

Anti-HP1 alpha/CBX5 antibody



Catalog Number: 106669

Product name

Anti-HP1 alpha/CBX5 antibody

Specificity

Human CBX5

Antibody description

Rabbit polyclonal to HP1 alpha/CBX5

Preparation

Produced in rabbits immunized with a synthetic peptide corresponding to the center region of the Human CBX5, and purified by antigen affinity chromatography.

Formulation

0.2 µm filtered solution in PBS

Storage

This antibody can be stored at 2°C-8°C for one month without detectable loss of activity. Antibody products are stable for twelve months from date of receipt when stored at -20°C to -80°C.

Preservative-Free.

Sodium azide is recommended to avoid contamination (final concentration 0.05%-0.1%). It is toxic to cells and should be disposed of

properly. Avoid repeated freeze-thaw cycles.

Clonality

Polyclonal

Ig Type

Rabbit IgG

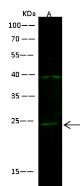
Applications

WB

Dilutions

WB: 10-30 µg/ml

Validations



| Items | Lanes | A |
|---|-------|--|
| Sample (whole cell lysate) | | A431 |
| Sample Volume (µg/lane) | | 30 |
| Gel | | 13% SDS-PAGE reducing gel |
| Recommended Concentration | | 10-30 µg/ml |
| Secondary Antibody | | Dylight 800-labeled Antibody to Rabbit IgG (H+L), at 1:5000 dilution. |
| Developed using Odyssey imaging system. | | |
| Explanation | | Predicted band size: 26 kDa Observed band size: 24 kDa Additional bands at: 39 kDa (We are unsure as to the identity of these extra bands. They are possible non-specific bindings). |

CBX5 Antibody, Rabbit PAb, Antigen Affinity Purified, Western blot