

MTA2 Polyclonal Antibody



Catalog Number: 160669

Product name

MTA2 Polyclonal Antibody

Specificity

Human, Mouse

Antibody description

Polyclonal antibody to MTA2

Preparation

Antigen: A synthetic peptide of human MTA2

Formulation

PBS with 0.02% sodium azide, 50% glycerol, pH7.3.

Storage

Store at -20°C. Avoid freeze / thaw cycles.

Clonality

Polyclonal

Ig Type

Rabbit IgG

Applications

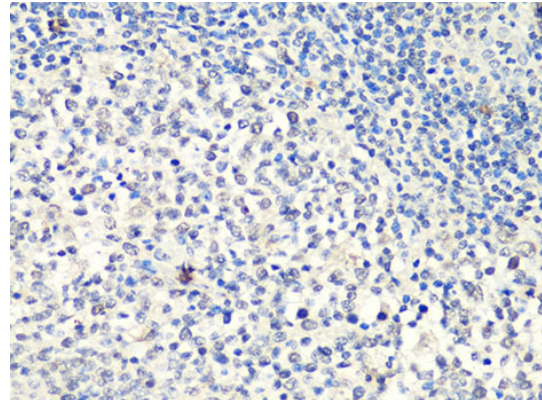
WB, IHC

Dilutions

WB 1:200 - 1:1000

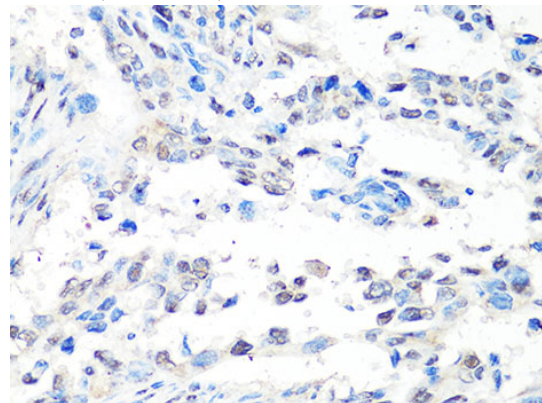
IHC 1:50 - 1:100

Validations



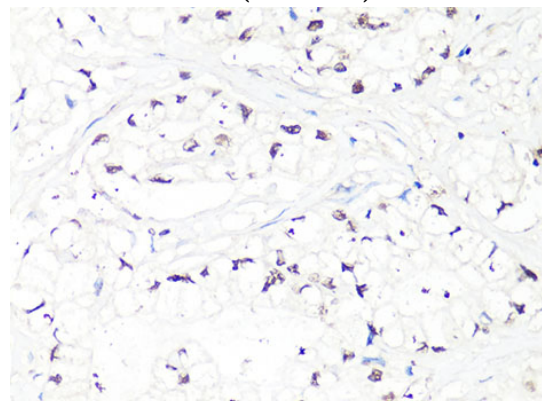
Immunohistochemistry - MTA2 Polyclonal Antibody

Immunohistochemistry of paraffin-embedded human tonsil using MTA2 Antibody at dilution of 1:100 (40x lens).



Immunohistochemistry - MTA2 Polyclonal Antibody

Immunohistochemistry of paraffin-embedded human lung cancer using MTA2 Antibody at dilution of 1:100 (40x lens).



Immunohistochemistry - MTA2 Polyclonal

MTA2 Polyclonal Antibody



Catalog Number: 160669

Antibody

human gastric cancer using MTA2 Antibody at dilution of 1:100 (40x lens).

Immunohistochemistry of paraffin-embedded