

# LAMA4 antibody

Catalog Number: 112269

## Product name

LAMA4 antibody

## Specificity

Human; other species not tested.

## Antibody description

LAMA4 Rabbit Polyclonal antibody. Positive IHC detected in human ovary tissue. Positive WB detected in human heart tissue, human skeletal muscle tissue. Observed molecular weight by Western-blot: 11-13 kDa

## Preparation

This antibody was obtained by immunization of LAMA4 recombinant protein (Accession Number: NM\_001105209). Purification method: Antigen affinity purified.

## Formulation

PBS with 0.1% sodium azide and 50% glycerol pH 7.3.

## Storage

Store at -20°C. DO NOT ALIQUOT

## Clonality

Polyclonal

## Ig Type

Rabbit IgG

## Applications

ELISA, WB, IHC

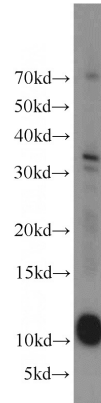
## Dilutions

Recommended Dilution:

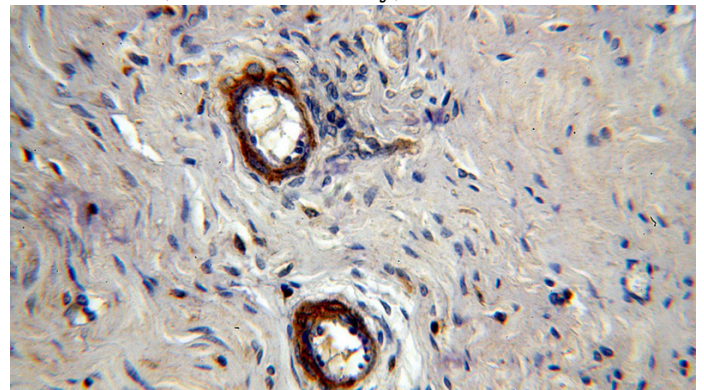
WB: 1:200-1:2000

IHC: 1:20-1:200

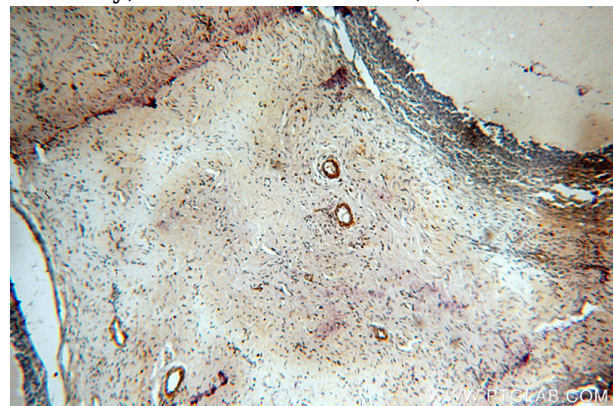
## Validations



human heart tissue were subjected to SDS PAGE followed by western blot with Catalog No:112269(LAMA4 antibody) at dilution of 1:1000



Immunohistochemical of paraffin-embedded human ovary using Catalog No:112269(LAMA4 antibody) at dilution of 1:100 (under 40x lens)



Immunohistochemical of paraffin-embedded human ovary using Catalog No:112269(LAMA4 antibody) at dilution of 1:100 (under 10x lens)