

GPC4 Polyclonal Antibody



Catalog Number: 161269

Product name

GPC4 Polyclonal Antibody

Specificity

Human, Mouse, Rat

Antibody description

Polyclonal antibody to GPC4

Preparation

Antigen: Recombinant fusion protein containing a sequence corresponding to amino acids 357-556 of human GPC4 (NP_001439.2).

Formulation

PBS with 0.02% sodium azide, 50% glycerol, pH7.3.

Storage

Store at -20°C. Avoid freeze / thaw cycles.

Clonality

Polyclonal

Ig Type

Rabbit IgG

Applications

WB, IHC, IF

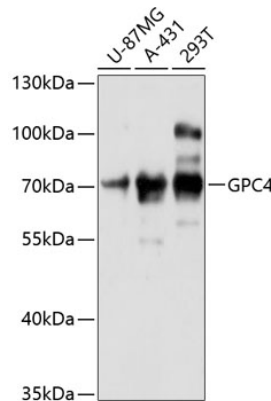
Dilutions

WB 1:500 - 1:2000

IHC 1:50 - 1:200

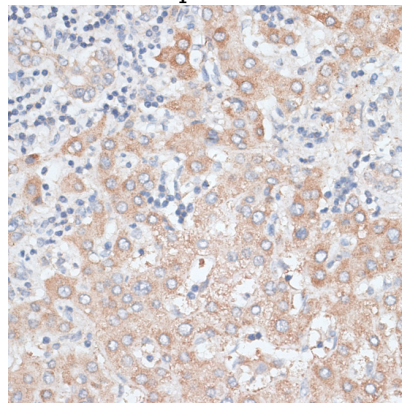
IF 1:50 - 1:200

Validations



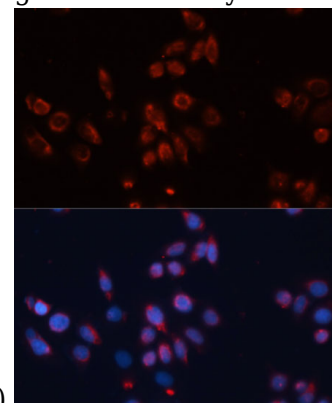
Western blot - GPC4 Polyclonal Antibody

Western blot analysis of extracts of various cell lines, using GPC4 antibody at 1:3000 dilution. Secondary antibody: HRP Goat Anti-Rabbit IgG (H+L) at 1:10000 dilution. Lysates/proteins: 25ug per lane. Blocking buffer: 3% nonfat dry milk in TBST. Detection: ECL Basic Kit. Exposure time: 30s.



Immunohistochemistry - GPC4 Polyclonal Antibody

Immunohistochemistry of paraffin-embedded human liver using GPC4 antibody at dilution of



1:100 (40x lens).

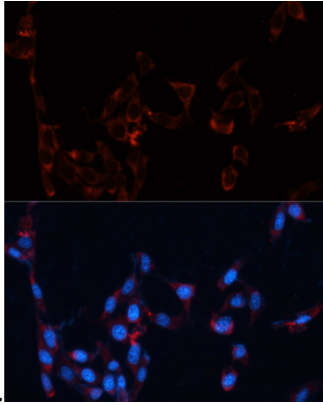
GPC4 Polyclonal Antibody



Catalog Number: 161269

Immunofluorescence - GPC4 Polyclonal Antibody

Immunofluorescence analysis of HeLa cells using GPC4 antibody at dilution of 1:100. Blue: DAPI for



nuclear staining.

Immunofluorescence - GPC4 Polyclonal Antibody

Immunofluorescence analysis of NIH/3T3 cells using GPC4 antibody at dilution of 1:100. Blue: DAPI for nuclear staining.