

CHCHD3 Polyclonal Antibody



Catalog Number: 165969

Product name

CHCHD3 Polyclonal Antibody

Specificity

Human, Mouse, Rat

Antibody description

Polyclonal antibody to CHCHD3

Preparation

Antigen: Recombinant fusion protein containing a sequence corresponding to amino acids 1-227 of human CHCHD3 (NP_060282.1).

Formulation

PBS with 0.02% sodium azide, 50% glycerol, pH7.3.

Storage

Store at -20°C. Avoid freeze / thaw cycles.

Clonality

Polyclonal

Ig Type

Rabbit IgG

Applications

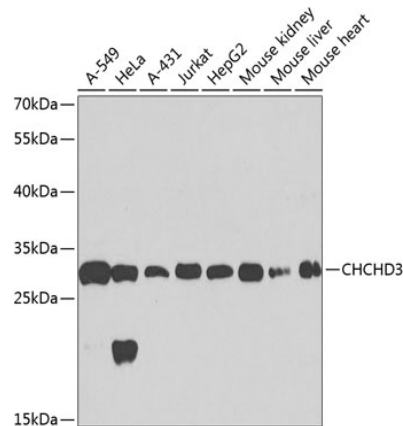
WB, IHC

Dilutions

WB 1:500 - 1:2000

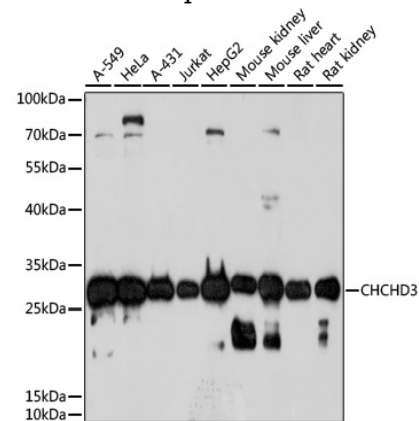
IHC 1:50 - 1:100

Validations



Western blot - CHCHD3 Polyclonal Antibody

Western blot analysis of extracts of various cell lines, using CHCHD3 antibody at 1:1000 dilution. Secondary antibody: HRP Goat Anti-Rabbit IgG (H+L) at 1:10000 dilution. Lysates/proteins: 25ug per lane. Blocking buffer: 3% nonfat dry milk in TBST. Detection: ECL Basic Kit. Exposure time: 40s.



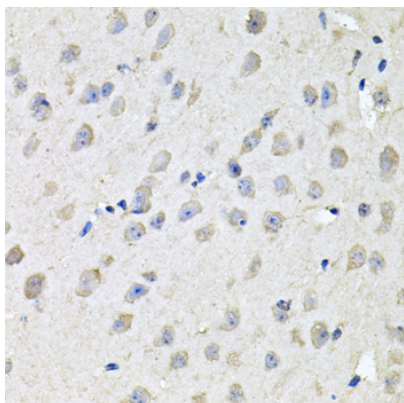
Western blot - CHCHD3 Polyclonal Antibody

Western blot analysis of extracts of various cells, using CHCHD3 antibody at 1:1000 dilution ratio through one-step method. Secondary antibody: HRP Goat Anti-Rabbit IgG (H+L) at 1:10000 dilution. Lysates/proteins: 25ug per lane. Blocking buffer: 3% nonfat dry milk in TBST. Detection: ECL Basic Kit. Exposure time: 5min.

CHCHD3 Polyclonal Antibody

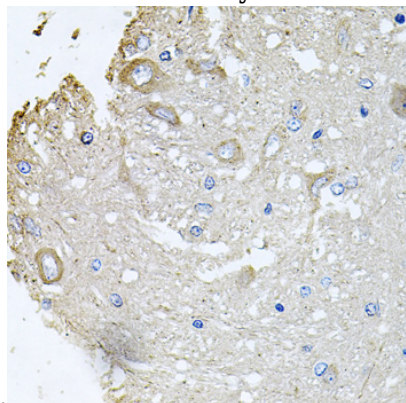


Catalog Number: 165969



Immunohistochemistry - CHCHD3 Polyclonal Antibody

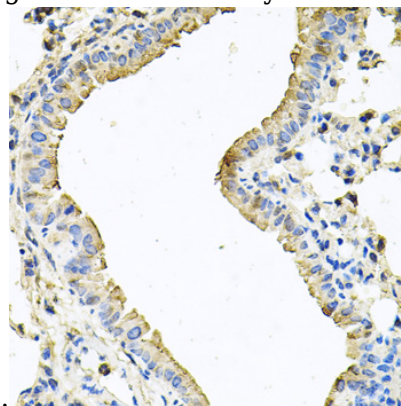
Immunohistochemistry of paraffin-embedded mouse brain using CHCHD3 antibody at dilution



of 1:100 (40x lens).

Immunohistochemistry - CHCHD3 Polyclonal Antibody

Immunohistochemistry of paraffin-embedded rat brain using CHCHD3 antibody at dilution of 1:100



(40x lens).

Immunohistochemistry - CHCHD3 Polyclonal Antibody

Immunohistochemistry of paraffin-embedded mouse lung using CHCHD3 antibody at dilution of 1:100 (40x lens).