

S1PR2 antibody

Catalog Number: 114969

Product name

S1PR2 antibody

Specificity

Human, Mouse, Rat; other species not tested.

Antibody description

S1PR2 Rabbit Polyclonal antibody. Positive IP detected in MCF-7 cells. Positive WB detected in MCF7 cells, HeLa cells. Observed molecular weight by Western-blot: 40-50 kDa

Preparation

This antibody was obtained by immunization of S1PR2 recombinant protein (Accession Number: NM_004230). Purification method: Antigen affinity purified.

Formulation

PBS with 0.02% sodium azide and 50% glycerol pH 7.3.

Storage

Store at -20°C. DO NOT ALIQUOT

Clonality

Polyclonal

Ig Type

Rabbit IgG

Applications

ELISA, WB, IP

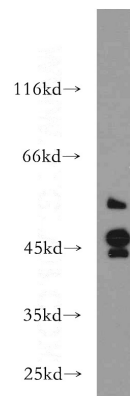
Dilutions

Recommended Dilution:

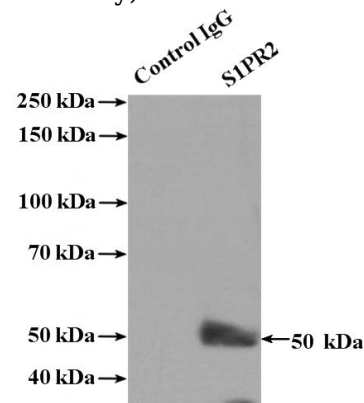
WB: 1:200-1:2000

IP: 1:200-1:1000

Validations



MCF7 cells were subjected to SDS PAGE followed by western blot with Catalog No:114969(S1PR2 antibody) at dilution of 1:100



IP Result of anti-S1PR2 (IP:Catalog No:114969, 4ug; Detection:Catalog No:114969 1:300) with MCF-7 cells lysate 1320ug.