

Anti-METAP1 antibody



Catalog Number: 104969

Product name

Anti-METAP1 antibody

Immunogen

[Human METAP1 \(His Tag\) recombinant protein](#)

Specificity

Human METAP1

Antibody description

Rabbit polyclonal to METAP1

Preparation

Produced in rabbits immunized with purified, recombinant Human METAP1 (rh METAP1 ; NP_055958.2; His52-Phe386). METAP1 specific IgG was purified by Human METAP1 affinity chromatography.

Formulation

0.2 μ m filtered solution in PBS

Storage

This antibody can be stored at 2°C-8°C for one month without detectable loss of activity. Antibody products are stable for twelve months from date of receipt when stored at -20°C to -80°C.

Preservative-Free.

Sodium azide is recommended to avoid contamination (final concentration 0.05%-0.1%). It is toxic to cells and should be disposed of properly. Avoid repeated freeze-thaw cycles.

Clonality

Polyclonal

Ig Type

Rabbit IgG

Applications

ELISA, WB, IP

Dilutions

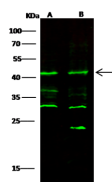
WB: 5-20 μ g/ml

ELISA: 0.1-0.2 μ g/mL μ g/ml

This antibody can be used at 0.1-0.2 μ g/mL μ g/ml with the appropriate secondary reagents to detect Human METAP1.

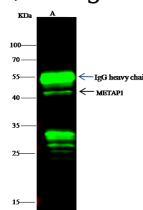
IP: 1-4 μ g/mg of lysate

Validations



Lanes	A	B
Items		
Sample (whole cell lysate)	A549	HEK293
Sample Volume (µg/lane)	30	30
Gel	13%SDS-PAGE reducing gel	
Recommended Concentration	5-20 µg/ml	
Secondary Antibody	Dylight 800 labeled Antibody To Rabbit IgG (H+L), at 1:5000 dilution.	
Developed using Odyssey imaging system.		
Explanation	Predicted band size : 43 kDa Observed band size : 43 kDa Additional bands at : 36 kDa, 35 kDa, 30 kDa and 23 kDa (We are unsure as to the identity of these extra bands.)	

METAP1 Antibody, Rabbit PAb, Antigen Affinity



Lanes	A
Items	
Sample (whole cell lysate)	293T
Sample quantity	0.5 mg
IP antibody quantity	4 μ g
Immunomagnetic beads Protein G	60 μ g
Gel	13% SDS-PAGE reducing gel
Primary antibody	METAP1 antibody at 10 μ g/ml
Secondary antibody	Dylight 800-labeled antibody to rabbit IgG (H+L), at 1:5000 dilution

Purified, Western blot

METAP1 Antibody, Rabbit PAb, Antigen Affinity
Purified, Immunoprecipitation