

# KCNJ15 antibody



Catalog Number: 111969

## Product name

KCNJ15 antibody

IP: 1:200-1:2000

IHC: 1:20-1:200

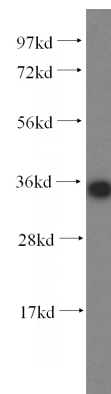
## Specificity

Human, Mouse, Rat; other species not tested.

## Validations

## Antibody description

KCNJ15 Rabbit Polyclonal antibody. Positive WB detected in HeLa cells, HepG2 cells. Positive IP detected in HepG2 cells. Positive IHC detected in human liver tissue. Observed molecular weight by Western-blot: 35 kDa



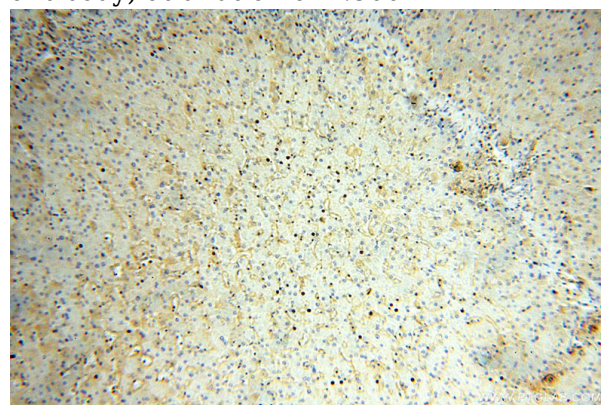
## Preparation

This antibody was obtained by immunization of KCNJ15 recombinant protein (Accession Number: XM\_011529560). Purification method: Antigen affinity purified.

HeLa cells were subjected to SDS PAGE followed by western blot with Catalog No:111969(KCNJ15 antibody) at dilution of 1:500

## Formulation

PBS with 0.02% sodium azide and 50% glycerol pH 7.3.



## Storage

Store at -20°C. DO NOT ALIQUOT

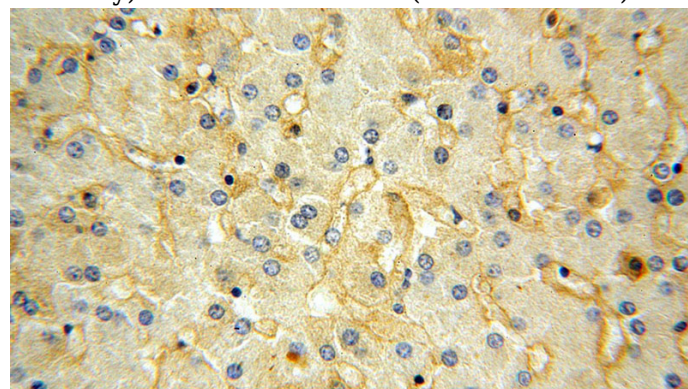
## Clonality

Polyclonal

Immunohistochemical of paraffin-embedded human liver using Catalog No:111969(KCNJ15 antibody) at dilution of 1:100 (under 10x lens)

## Ig Type

Rabbit IgG



## Applications

ELISA, WB, IHC, IP

## Dilutions

Recommended Dilution:

WB: 1:500-1:5000

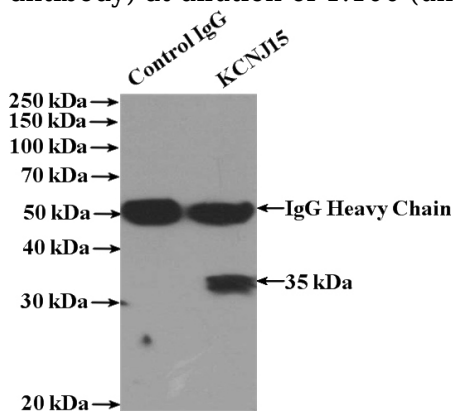
Immunohistochemical of paraffin-embedded human liver using Catalog No:111969(KCNJ15

# KCNJ15 antibody

Catalog Number: 111969

---

antibody) at dilution of 1:100 (under 40x lens)



IP Result of anti-KCNJ15 (IP:Catalog No:111969, 4ug; Detection:Catalog No:111969 1:500) with HepG2 cells lysate 1000ug.