

# SPIB antibody

Catalog Number: 115569

## Product name

SPIB antibody

## Specificity

Human, Mouse, Rat; other species not tested.

## Antibody description

SPIB Rabbit Polyclonal antibody. Positive IP detected in L02 cells. Positive WB detected in L02 cells. Observed molecular weight by Western-blot: 28 kDa

## Preparation

This antibody was obtained by immunization of SPIB recombinant protein (Accession Number: NM\_003121). Purification method: Antigen affinity purified.

## Formulation

PBS with 0.1% sodium azide and 50% glycerol pH 7.3.

## Storage

Store at -20°C. DO NOT ALIQUOT

## Clonality

Polyclonal

## Ig Type

Rabbit IgG

## Applications

ELISA, IP, WB

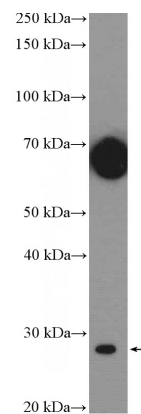
## Dilutions

Recommended Dilution:

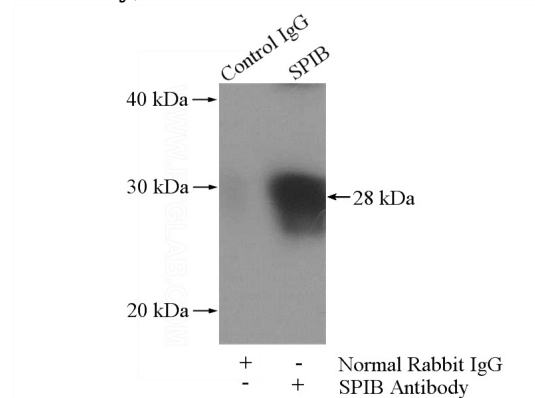
WB: 1:200-1:1000

IP: 1:200-1:1000

## Validations



L02 cells were subjected to SDS PAGE followed by western blot with Catalog No:115569(SPIB Antibody) at dilution of 1:300



IP Result of anti-SPIB (IP:Catalog No:115569, 4ug; Detection:Catalog No:115569 1:300) with L02 cells lysate 1800ug.