

# MDH2 antibody

Catalog Number: 112569

## Product name

MDH2 antibody

## Specificity

Human, Mouse, Rat; other species not tested.

## Antibody description

MDH2 Rabbit Polyclonal antibody. Positive IP detected in mouse lung tissue. Positive WB detected in mouse lung tissue, rat lung tissue. Observed molecular weight by Western-blot: 33 kDa

## Preparation

This antibody was obtained by immunization of MDH2 recombinant protein (Accession Number: NM\_005918). Purification method: Antigen affinity purified.

## Formulation

PBS with 0.1% sodium azide and 50% glycerol pH 7.3.

## Storage

Store at -20°C. DO NOT ALIQUOT

## Clonality

Polyclonal

## Ig Type

Rabbit IgG

## Applications

ELISA, WB, IP

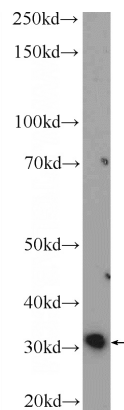
## Dilutions

Recommended Dilution:

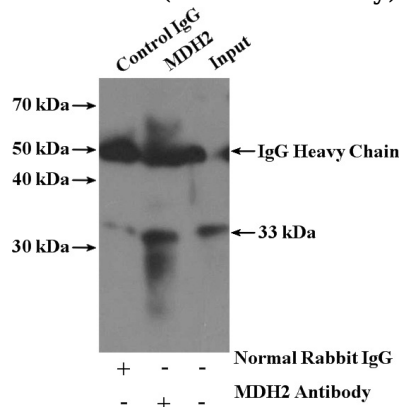
WB: 1:200-1:1000

IP: 1:200-1:1000

## Validations



mouse lung tissue were subjected to SDS PAGE followed by western blot with Catalog No:112569(MDH2 Antibody) at dilution of 1:300



IP Result of anti-MDH2 (IP:Catalog No:112569, 4ug; Detection:Catalog No:112569 1:300) with mouse lung tissue lysate 3600ug.