

Complement factor B antibody



Catalog Number: 107169

Product name

Complement factor B antibody

Specificity

Human; other species not tested.

Antibody description

Complement factor B Mouse Monoclonal antibody.
Positive IHC detected in human liver tissue.
Positive WB detected in human blood tissue.
Observed molecular weight by Western-blot: 93 kDa

Preparation

This antibody was obtained by immunization of Complement factor B recombinant protein (Accession Number: NM_001710). Purification method: Thiophilic Affinity Chromatography.

Formulation

PBS with 0.02% sodium azide and 50% glycerol pH 7.3.

Storage

Store at -20°C. DO NOT ALIQUOT

Clonality

Monoclonal

Ig Type

Mouse IgM

Applications

ELISA, WB, IHC

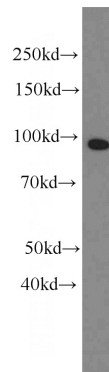
Dilutions

Recommended Dilution:

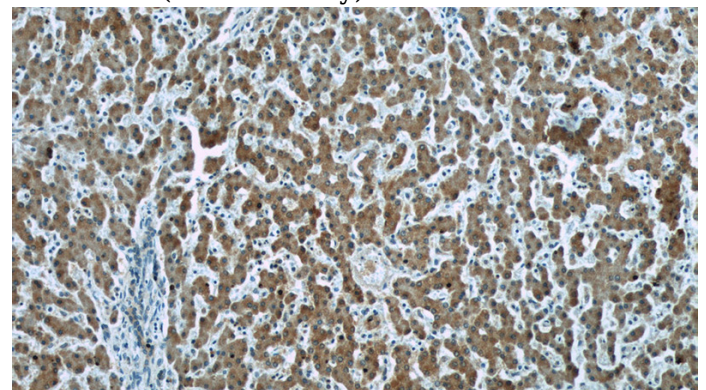
WB: 1:500-1:5000

IHC: 1:20-1:200

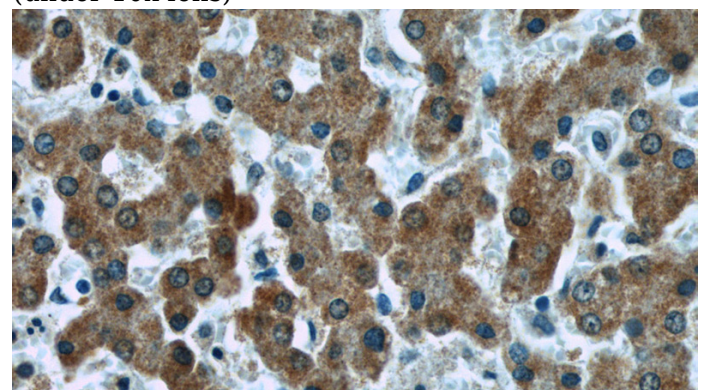
Validations



human blood tissue were subjected to SDS PAGE followed by western blot with Catalog No:107169(CFB antibody) at dilution of 1:1000



Immunohistochemistry of paraffin-embedded human liver tissue slide using Catalog No:107169(CFB Antibody) at dilution of 1:50 (under 10x lens)



Immunohistochemistry of paraffin-embedded human liver tissue slide using Catalog No:107169(CFB Antibody) at dilution of 1:50

Complement factor B antibody



Catalog Number: 107169

(under 40x lens)