

# SNX1 antibody

Catalog Number: 115469

## Product name

SNX1 antibody

IP: 1:200-1:2000

IHC: 1:20-1:200

## Specificity

Human, Mouse, Rat; other species not tested.

## Antibody description

SNX1 Rabbit Polyclonal antibody. Positive WB detected in HeLa cells, Jurkat cells. Positive IP detected in HeLa cells. Positive IHC detected in human breast cancer tissue, human kidney tissue, human pancreas cancer tissue. Observed molecular weight by Western-blot: 59-70 kDa

## Preparation

This antibody was obtained by immunization of SNX1 recombinant protein (Accession Number: NM\_003099). Purification method: Antigen affinity purified.

## Formulation

PBS with 0.1% sodium azide and 50% glycerol pH 7.3.

## Storage

Store at -20°C. DO NOT ALIQUOT

## Clonality

Polyclonal

## Ig Type

Rabbit IgG

## Applications

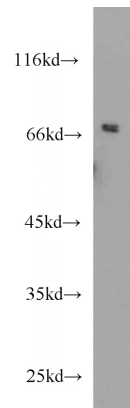
ELISA, WB, IP, IHC

## Dilutions

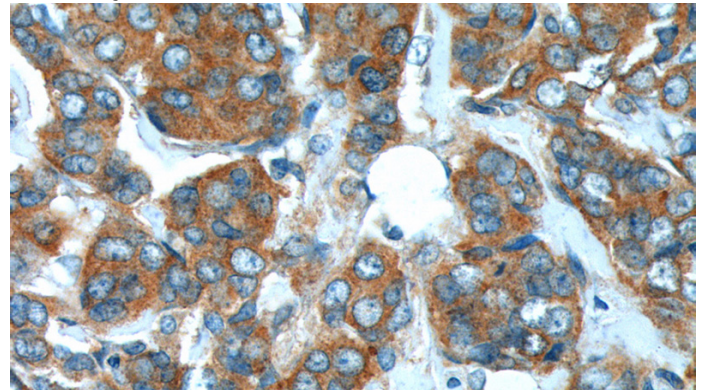
Recommended Dilution:

WB: 1:500-1:5000

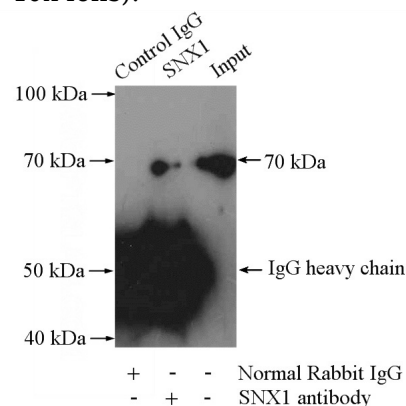
## Validations



HeLa cells were subjected to SDS PAGE followed by western blot with Catalog No:115469(SNX1 antibody) at dilution of 1:1000



Immunohistochemistry of paraffin-embedded human breast cancer tissue slide using Catalog No:115469(SNX1 Antibody) at dilution of 1:200 (under 40x lens).



IP Result of anti-SNX1 (IP:Catalog No:115469,

# SNX1 antibody



Catalog Number: 115469

---

4ug; Detection:Catalog No:115469 1:800) with HeLa cells lysate 2000ug.