

OCT1 antibody

Catalog Number: 113469

Product name

OCT1 antibody

WB: 1:500-1:5000

IP: 1:200-1:1000

Specificity

Human, Pig; other species not tested.

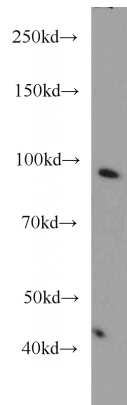
IHC: 1:20-1:200

IF: 1:10-1:100

Antibody description

OCT1 Rabbit Polyclonal antibody. Positive IF detected in HeLa cells. Positive IHC detected in human lymphoma tissue, human colon cancer tissue. Positive IP detected in HeLa cells. Positive WB detected in HeLa cells, HEK-293 cells, NCCIT cell. Observed molecular weight by Western-blot: 90 kDa

Validations



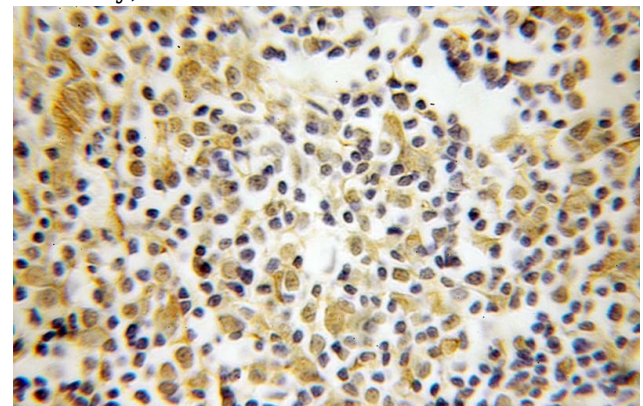
Preparation

This antibody was obtained by immunization of α CT1 recombinant protein (Accession Number: XM_047422875). Purification method: Antigen affinity purified.

HeLa cells were subjected to SDS PAGE followed by western blot with Catalog No:113469(POU2F1 antibody) at dilution of 1:1000

Formulation

PBS with 0.1% sodium azide and 50% glycerol pH 7.3.



Immunohistochemical of paraffin-embedded human lymphoma using Catalog No:113469(POU2F1 antibody) at dilution of 1:100

Storage

Store at -20°C. DO NOT ALIQUOT

Clonality

Polyclonal

Ig Type

Rabbit IgG

Applications

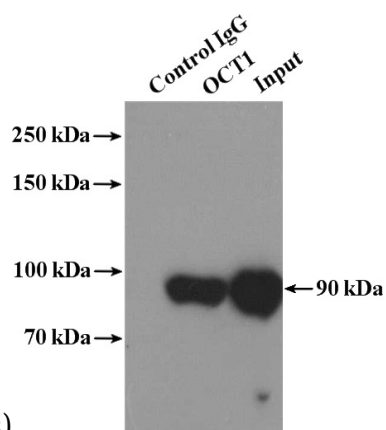
ELISA, WB, IHC, IF, IP

Dilutions

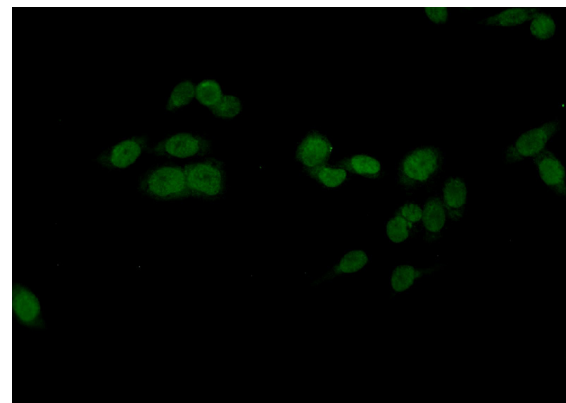
Recommended Dilution:

OCT1 antibody

Catalog Number: 113469



(under 25x lens)



Immunofluorescent analysis of HeLa cells using Catalog No:113469(POU2F1 Antibody) at dilution of 1:25 and Alexa Fluor 488-conjugated AffiniPure Goat Anti-Rabbit IgG(H+L)

IP Result of anti-POU2F1 (IP:Catalog No:113469, 4ug; Detection:Catalog No:113469 1:300) with HeLa cells lysate 1600ug.