

MMP16 Polyclonal Antibody



Catalog Number: 160469

Product name

MMP16 Polyclonal Antibody

Specificity

Human, Mouse, Rat

Antibody description

Polyclonal antibody to MMP16

Preparation

Antigen: Recombinant fusion protein containing a sequence corresponding to amino acids 290-565 of human MMP16 (NP_005932.2).

Formulation

PBS with 0.02% sodium azide, 50% glycerol, pH7.3.

Storage

Store at -20°C. Avoid freeze / thaw cycles.

Clonality

Polyclonal

Ig Type

Rabbit IgG

Applications

WB, IHC, IF

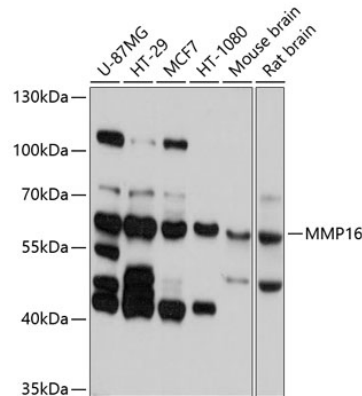
Dilutions

WB 1:500 - 1:2000

IHC 1:50 - 1:200

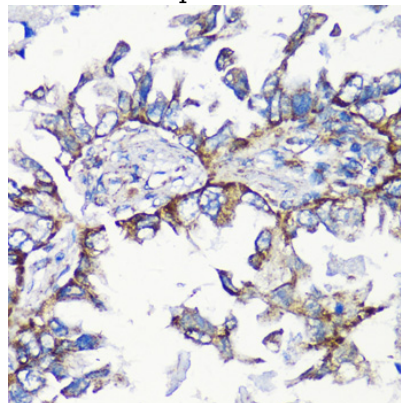
IF 1:50 - 1:200

Validations



Western blot - MMP16 Polyclonal Antibody

Western blot analysis of extracts of various cell lines, using MMP16 antibody at 1:1000 dilution. Secondary antibody: HRP Goat Anti-Rabbit IgG (H+L) at 1:10000 dilution. Lysates/proteins: 25ug per lane. Blocking buffer: 3% nonfat dry milk in TBST. Detection: ECL Basic Kit. Exposure time: 10s.



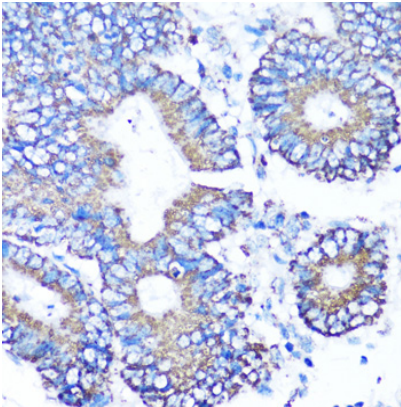
Immunohistochemistry - MMP16 Polyclonal Antibody

Immunohistochemistry of paraffin-embedded human lung cancer using MMP16 antibody at dilution of 1:100 (40x lens).

MMP16 Polyclonal Antibody

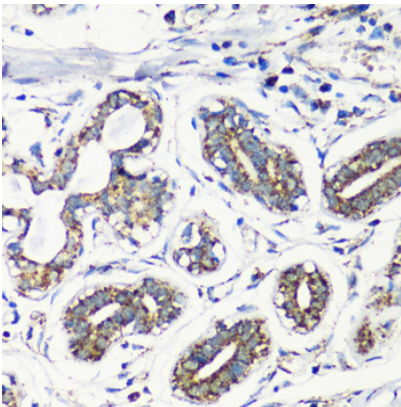


Catalog Number: 160469



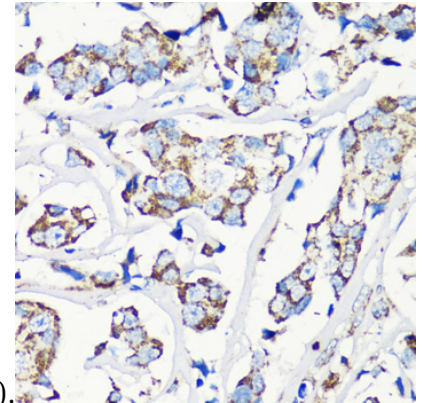
Immunohistochemistry - MMP16 Polyclonal Antibody

Immunohistochemistry of paraffin-embedded human colon carcinoma using MMP16 antibody at dilution of 1:100 (40x lens).



Immunohistochemistry - MMP16 Polyclonal Antibody

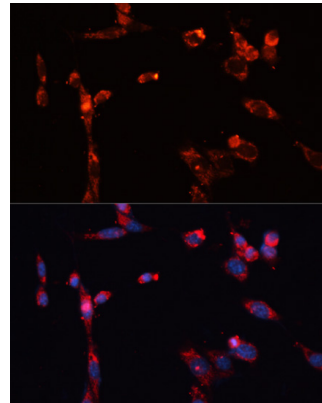
Immunohistochemistry of paraffin-embedded human breast using MMP16 antibody at dilution



of 1:100 (40x lens).

Immunohistochemistry - MMP16 Polyclonal Antibody

Immunohistochemistry of paraffin-embedded human breast cancer using MMP16 antibody at dilution of 1:100 (40x lens).



Immunofluorescence - MMP16 Polyclonal Antibody

Immunofluorescence analysis of NIH/3T3 cells using MMP16 antibody at dilution of 1:100. Blue: DAPI for nuclear staining.