

# Anti-beta Actin Rabbit antibody



Catalog Number: 169069

## Product name

Anti-beta Actin Rabbit antibody

## Specificity

Human, Mouse, Rat

## Antibody description

beta Actin Rabbit polyclonal antibody

## Preparation

Antigen: A synthesized peptide derived from human beta Actin

## Formulation

Rabbit IgG in phosphate buffered saline , pH 7.4, 150mM NaCl, 0.02% sodium azide and 50% glycerol.

## Storage

Store at 4°C short term. Store at -20°C long term. Avoid freeze / thaw cycle.

## Clonality

Polyclonal

## Ig Type

Rabbit IgG

## Applications

WB, IHC-P, ICC/IF

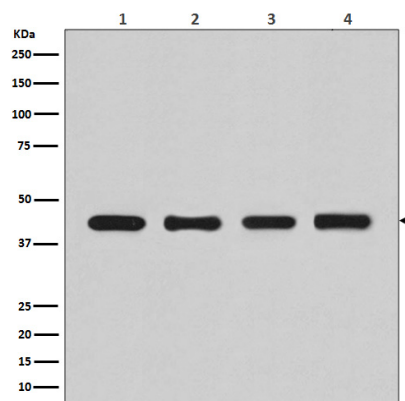
## Dilutions

WB: 1/3000-1/10000

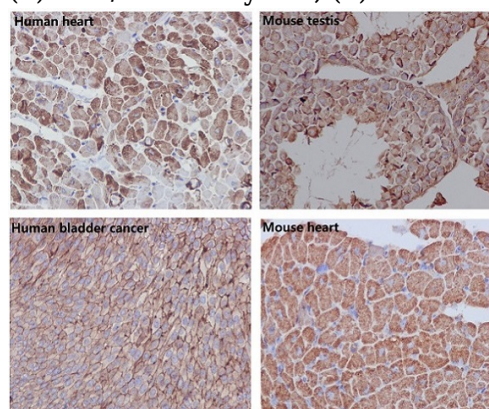
IHC: 1/50-1/200

ICC/IF: 1/50-1/200

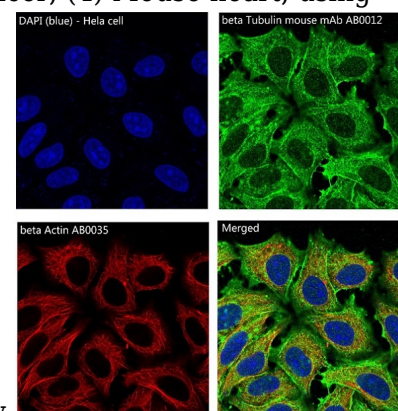
## Validations



Western blot analysis of beta Actin expression in (1) HeLa cell lysate; (2) Human fetal kidney lysate; (3) NIH/3T3 cell lysate; (4) PC-12 cell lysate.



Immunohistochemical analysis of paraffin-embedded (1) Human heart; (2) Mouse testis; (3) Human bladder cancer; (4) Mouse heart, using



beta Actin Antibody.

Immunofluorescent analysis of HeLa cells, using beta Actin Antibody.