

KRIT1 Polyclonal Antibody



Catalog Number: 165069

Product name

KRIT1 Polyclonal Antibody

Specificity

Human, Mouse, Rat

Antibody description

Polyclonal antibody to KRIT1

Preparation

Antigen: Recombinant fusion protein containing a sequence corresponding to amino acids 467-736 of human KRIT1 (NP_919438.1).

Formulation

PBS with 0.02% sodium azide, 50% glycerol, pH7.3.

Storage

Store at -20°C. Avoid freeze / thaw cycles.

Clonality

Polyclonal

Ig Type

Rabbit IgG

Applications

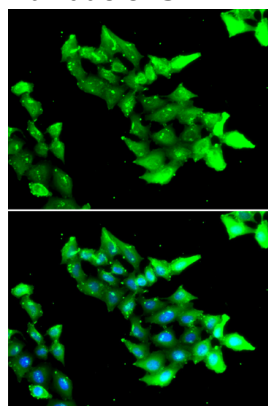
WB, IF

Dilutions

WB 1:500 - 1:2000

IF 1:50 - 1:100

Validations



Immunofluorescence - KRIT1 Polyclonal Antibody

Immunofluorescence analysis of HeLa cells using KRIT1 antibody . Blue: DAPI for nuclear staining.