

# GPR101-Specific antibody



Catalog Number: 111069

## Product name

GPR101-Specific antibody

## Specificity

Human, Monkey; other species not tested.

## Antibody description

GPR101-Specific Rabbit Polyclonal antibody. Positive WB detected in HEK-293 cells, COS-7 cells. Positive FC detected in HEK-293 cells. Observed molecular weight by Western-blot: 57 kDa

## Preparation

This antibody was obtained by immunization of Peptide (Accession Number: NM\_054021). Purification method: Antigen affinity purified.

## Formulation

PBS with 0.02% sodium azide and 50% glycerol pH 7.3.

## Storage

Store at -20°C. DO NOT ALIQUOT

## Clonality

Polyclonal

## Ig Type

Rabbit IgG

## Applications

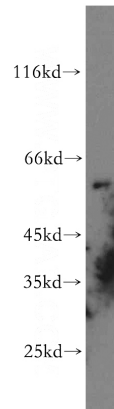
ELISA, WB, FC

## Dilutions

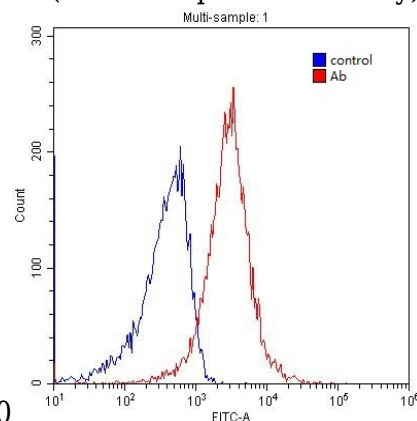
Recommended Dilution:

WB: 1:200-1:2000

## Validations



HEK-293 cells were subjected to SDS PAGE followed by western blot with Catalog No:111069(GPR101-Specific antibody) at dilution



of 1:300

1X10<sup>6</sup> HEK-293 cells were stained with 0.2ug GPR101-Specific antibody (Catalog No:111069, red) and control antibody (blue). Fixed with blocked with 3% BSA (30 min). Alexa Fluor 488-conjugated AffiniPure Goat Anti-Rabbit IgG(H+L) with dilution 1:1500.