

# PRSS1 Polyclonal Antibody



Catalog Number: 161069

## Product name

PRSS1 Polyclonal Antibody

## Specificity

Human, Mouse

## Antibody description

Polyclonal antibody to PRSS1

## Preparation

Antigen: Recombinant fusion protein containing a sequence corresponding to amino acids 24-247 of human PRSS1 (NP\_002760.1).

## Formulation

PBS with 0.02% sodium azide, 50% glycerol, pH7.3.

## Storage

Store at -20°C. Avoid freeze / thaw cycles.

## Clonality

Polyclonal

## Ig Type

Rabbit IgG

## Applications

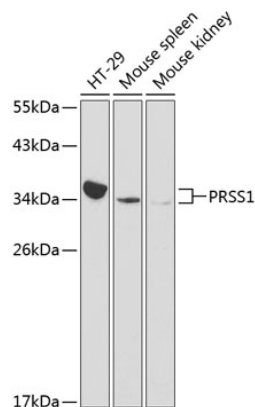
WB, IHC

## Dilutions

WB 1:500 - 1:2000

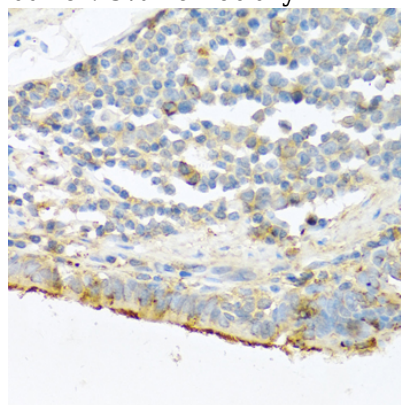
IHC 1:100 - 1:200

## Validations



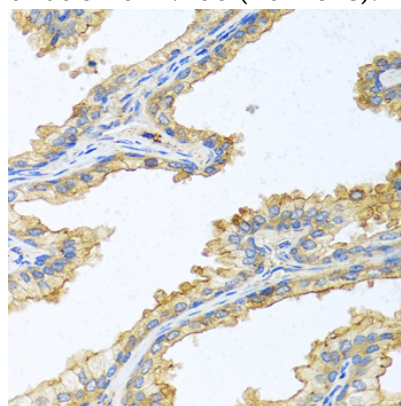
Western blot - PRSS1 Polyclonal Antibody

Western blot analysis of extracts of various cell lines, using PRSS1 antibody at 1:1000 dilution. Secondary antibody: HRP Goat Anti-Rabbit IgG (H+L) at 1:10000 dilution. Lysates/proteins: 25ug per lane. Blocking buffer: 3% nonfat dry milk in TBST.



Immunohistochemistry - PRSS1 Polyclonal Antibody

Immunohistochemistry of paraffin-embedded human lung cancer using PRSS1 antibody at dilution of 1:100 (40x lens).



# PRSS1 Polyclonal Antibody

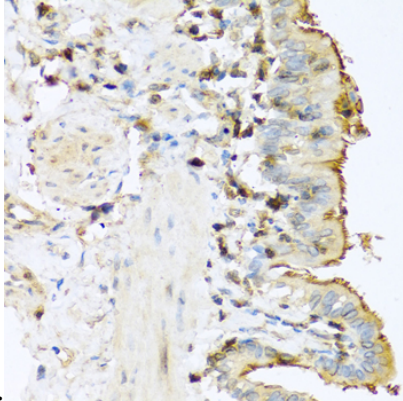


Catalog Number: 161069

---

## Immunohistochemistry - PRSS1 Polyclonal Antibody

Immunohistochemistry of paraffin-embedded human prostate using PRSS1 antibody at dilution



of 1:100 (40x lens).

## Immunohistochemistry - PRSS1 Polyclonal Antibody

Immunohistochemistry of paraffin-embedded mouse lung using PRSS1 antibody at dilution of 1:100 (40x lens).