

# SYF2 antibody

Catalog Number: 115759

---

**Product name**

SYF2 antibody

**Specificity**

human, mouse, rat; other species not tested.

**Antibody description**

SYF2 Rabbit Polyclonal antibody. Positive WB detected in HEK-293 cells. Observed molecular weight by Western-blot: 29kd

**Preparation**

This antibody was obtained by immunization of SYF2 recombinant protein (Accession Number: NM\_015484). Purification method: Antigen affinity purified.

**Formulation**

PBS with 0.02% sodium azide and 50% glycerol pH 7.3.

**Storage**

Store at -20°C. DO NOT ALIQUOT

**Clonality**

Polyclonal

**Ig Type**

Rabbit IgG

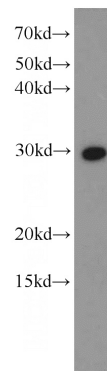
**Applications**

ELISA, WB

**Dilutions**

Recommended Dilution:

WB: 1:200-1:2000

**Validations**

HEK-293 cells were subjected to SDS PAGE followed by western blot with Catalog No:115759(SYF2 antibody) at dilution of 1:600