

General Information

Gene Name Synonym

C1 esterase; Complement component 1 subcomponent s-A; Complement C1s-A subcomponent heavy chain; Complement C1s-A subcomponent light chain

Protein Construction

A DNA sequence encoding the mouse C1sa (AAH18319.1) (Met1-Asp688) was expressed with a polyhistidine tag at the C-terminus.

Organism

Mouse

Expression Host

Human Cells

QC Testing

Purity

> 85 % as determined by SDS-PAGE.

Endotoxin

< 1.0 EU per μg protein as determined by the LAL method.

Stability

Samples are stable for up to twelve months from date of receipt at -70°C

Predicted N terminal

Glu 16

Molecular Mass

The recombinant mouse C1sa consists 684 amino acids and predicts a molecular mass of 76.6 kDa.

Formulation

Lyophilized from sterile PBS, pH 7.4.

1. 5 % trehalose and mannitol are added as protectants before lyophilization.

2. Please contact us for any concerns or special requirements.

Usage Guide

Storage

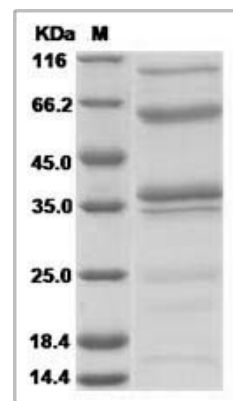
Store it under sterile conditions at -20°C to -80°C .

It is recommended that the protein be aliquoted for optimal storage. Avoid repeated freeze-thaw cycles.

Reconstitution

Adding sterile water, prepare a stock solution of 0.25 mg/ml. Concentration is measured by UV-Vis.

SDS-PAGE



Mouse Complement C1s-A subcomponent Protein (His Tag)