

BARHL2 antibody



Catalog Number: 108359

Product name

BARHL2 antibody

IHC: 1:20-1:200

IF: 1:50-1:500

Specificity

Human, Mouse; other species not tested.

Antibody description

BARHL2 Rabbit Polyclonal antibody. Positive IHC detected in human testis tissue. Positive IF detected in HepG2 cells. Positive WB detected in HepG2 cells, NIH/3T3 cells. Observed molecular weight by Western-blot: 42-45 kDa

Preparation

This antibody was obtained by immunization of BARHL2 recombinant protein (Accession Number: NM_020063). Purification method: Antigen Affinity purified.

Formulation

PBS with 0.02% sodium azide and 50% glycerol pH 7.3.

Storage

Store at -20°C. DO NOT ALIQUOT

Clonality

Polyclonal

Ig Type

Rabbit IgG

Applications

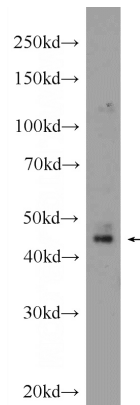
ELISA, WB, IHC, IF

Dilutions

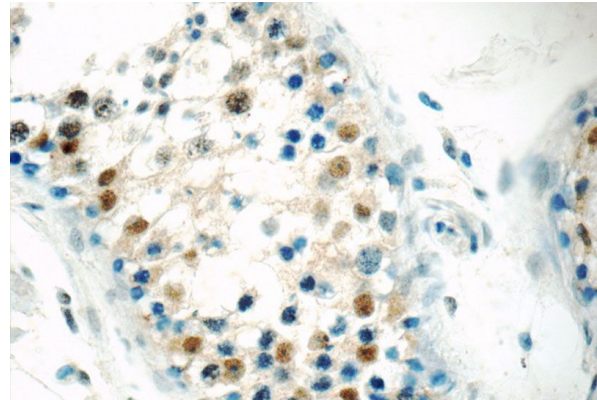
Recommended Dilution:

WB: 1:200-1:1000

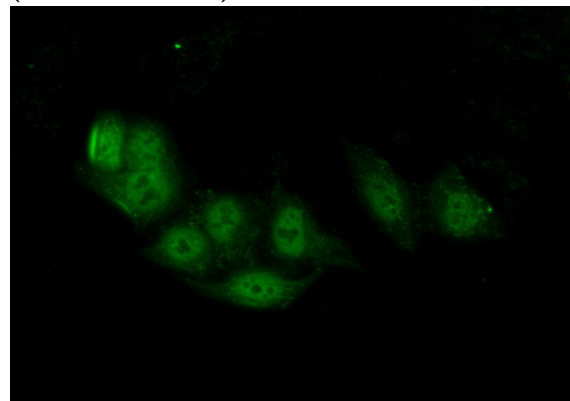
Validations



HepG2 cells were subjected to SDS PAGE followed by western blot with Catalog No:108359(BARHL2 Antibody) at dilution of 1:300



Immunohistochemistry of paraffin-embedded human testis tissue slide using Catalog No:108359(BARHL2 Antibody) at dilution of 1:50 (under 40x lens)



Immunofluorescent analysis of (10% HepG2 cells)

BARHL2 antibody



Catalog Number: 108359

Formaldehyde) fixed HepG2 cells using Catalog
No:108359(BARHL2 Antibody) at dilution of 1:50

and Alexa Fluor 488-conjugated AffiniPure Goat
Anti-Rabbit IgG(H+L)