

# GLI2 Polyclonal Antibody

Catalog Number: 163359

## Product name

GLI2 Polyclonal Antibody

## Specificity

Human, Mouse, Rat

## Antibody description

Polyclonal antibody to GLI2

## Preparation

Antigen: Recombinant protein of mouse GLI2.

## Formulation

PBS with 0.02% sodium azide, 50% glycerol, pH7.3.

## Storage

Store at -20°C. Avoid freeze / thaw cycles.

## Clonality

Polyclonal

## Ig Type

Rabbit IgG

## Applications

WB, IHC, IF

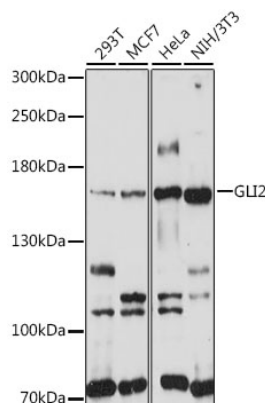
## Dilutions

WB 1:500 - 1:2000

IHC 1:50 - 1:100

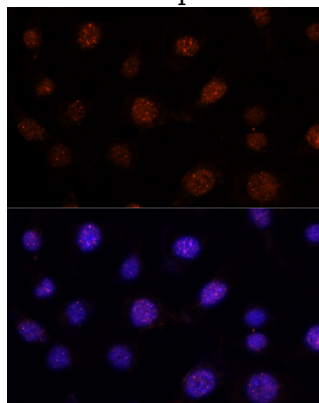
IF 1:50 - 1:100

## Validations



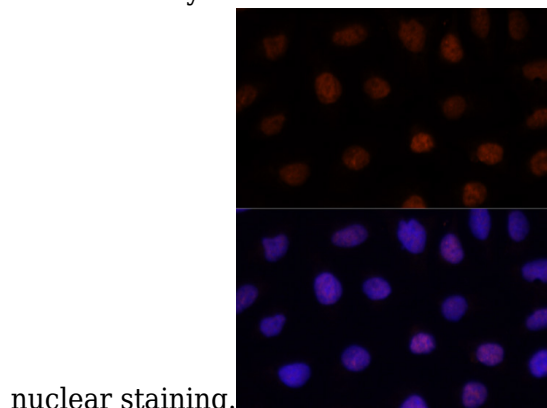
Western blot - GLI2 Polyclonal Antibody

Western blot analysis of extracts of various cell lines, using GLI2 antibody at 1:1000 dilution. Secondary antibody: HRP Goat Anti-Rabbit IgG (H+L) at 1:10000 dilution. Lysates/proteins: 25ug per lane. Blocking buffer: 3% nonfat dry milk in TBST. Detection: ECL Basic Kit. Exposure time: 30s.



Immunofluorescence - GLI2 Polyclonal Antibody

Immunofluorescence analysis of L-929 cells using GLI2 antibody at dilution of 1:100. Blue: DAPI for



nuclear staining.

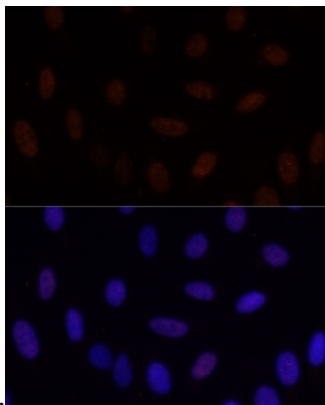
# GLI2 Polyclonal Antibody

Catalog Number: 163359

---

## Immunofluorescence - GLI2 Polyclonal Antibody

Immunofluorescence analysis of U-2 OS cells using GLI2 antibody at dilution of 1:100. Blue:



DAPI for nuclear staining.

## Immunofluorescence - GLI2 Polyclonal Antibody

Immunofluorescence analysis of U-2 OS cells using GLI2 antibody at dilution of 1:100. Blue: DAPI for nuclear staining.