

General Information

Protein Construction

A DNA sequence encoding the rat MET (Q2IBC7) (Met1-Asn932) was expressed with the Fc region of human IgG1 at the C-terminus.

Organism

Rat

Expression Host

Human Cells

QC Testing

Activity

Immobilized rat HGF (Cat:504728) at 10 µg/ml (100 µl/well) can bind Rat MET-Fc, EC₅₀ of Rat MET-Fc is 0.02-0.05 µg/ml.

Purity

(63.0+32.1) % as determined by SDS-PAGE

Endotoxin

< 1.0 EU per µg of the protein as determined by the LAL method

Stability

Samples are stable for up to twelve months from date of receipt at -70°C

Predicted N terminal

Glu 25

Molecular Mass

The recombinant rat MET/Fc is a disulfide-linked homodimer. The reduced monomer comprises 1149 amino acids and has a predicted molecular mass of 128.1 kDa. The apparent molecular mass of the protein is approximately 97 and 39 kDa in SDS-PAGE under reducing conditions.

Formulation

Lyophilized from sterile PBS, pH 7.4.

1. 5 % trehalose and mannitol are added as protectants before lyophilization.

2. Please contact us for any concerns or special requirements.

Usage Guide

Storage

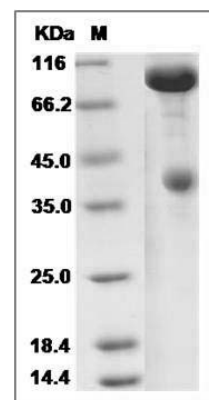
Store it under sterile conditions at -20°C to -80°C.

It is recommended that the protein be aliquoted for optimal storage. Avoid repeated freeze-thaw cycles.

Reconstitution

Adding sterile water, prepare a stock solution of 0.25 mg/ml. Concentration is measured by UV-Vis.

SDS-PAGE



Rat c-MET / HGFR Protein (Fc Tag) SDS-PAGE