

COMT Polyclonal Antibody



Catalog Number: 161359

Product name

COMT Polyclonal Antibody

Specificity

Human, Mouse

Antibody description

Polyclonal antibody to COMT

Preparation

Antigen: Recombinant fusion protein containing a sequence corresponding to amino acids 42-221 of human COMT (NP_009294.1).

Formulation

PBS with 0.02% sodium azide, 50% glycerol, pH7.3.

Storage

Store at -20°C. Avoid freeze / thaw cycles.

Clonality

Polyclonal

Ig Type

Rabbit IgG

Applications

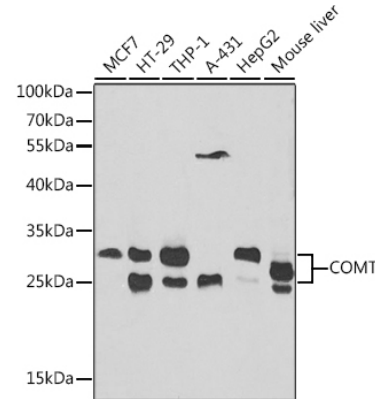
WB, IP

Dilutions

WB 1:500 - 1:2000

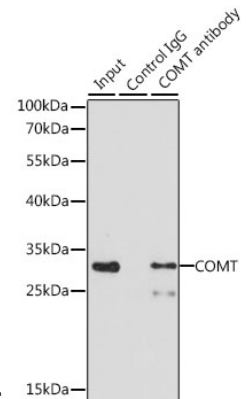
IP 1:50 - 1:100

Validations



Western blot - COMT Polyclonal Antibody

Western blot analysis of extracts of various cell lines, using COMT antibody at 1:1000 dilution. Secondary antibody: HRP Goat Anti-Rabbit IgG (H+L) at 1:10000 dilution. Lysates/proteins: 25ug per lane. Blocking buffer: 3% nonfat dry milk in TBST. Detection: ECL



Basic Kit .Exposure time: 60s.

Immunoprecipitation - COMT Polyclonal Antibody

Immunoprecipitation analysis of 200ug extracts of MCF-7 cells, using 3 ug COMT antibody . Western blot was performed from the immunoprecipitate using COMT antibody at a dilution of 1:1000.