

# Human Carboxypeptidase B1/CPB1 (His Tag) recombinant protein



Catalog Number: 500359

## General Information

### Gene Name Synonym

Pancreas-specific protein

### Protein Construction

A DNA sequence encoding the human CPB1 (NP\_001862.2) (Met 1-Tyr 417) was expressed with a C-terminal polyhistidine tag.

### Organism

Human

### Expression Host

Human Cells

## QC Testing

### Activity

Measured by its ability to cleave a colorimetric peptide substrate, Hippuryl-Arg, as measured using the wavelength at 254 nm. The specific activity is >10000 pmoles/min/μg.

### Purity

> 98 % as determined by SDS-PAGE

### Endotoxin

< 1.0 EU per μg of the protein as determined by the LAL method

### Stability

Samples are stable for up to twelve months from date of receipt at -70°C

### Predicted N terminal

His 16

## Molecular Mass

The recombinant human CPB1 consists of 413 amino acids and has a predicted molecular mass of 47 kDa. In SDS-PAGE under reducing conditions, it migrates as an approximately 45 kDa band.

## Formulation

Lyophilized from sterile 25mM MES, 0.1 M NaCl, pH 6.5

1. 5 % trehalose and mannitol are added as protectants before lyophilization.
2. Please contact us for any concerns or special requirements.

## Usage Guide

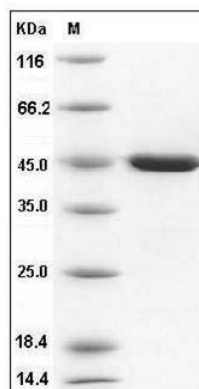
### Storage

Store it under sterile conditions at -20°C to -80°C. It is recommended that the protein be aliquoted for optimal storage. Avoid repeated freeze-thaw cycles.

### Reconstitution

Adding sterile water, prepare a stock solution of 0.25 mg/ml. Concentration is measured by UV-Vis.

### SDS-PAGE



Human Carboxypeptidase B1 / CPB1 Protein (His Tag) SDS-PAGE