

# 14-3-3 epsilon antibody

Catalog Number: 107659

## Product name

14-3-3 epsilon antibody

WB: 1:1000-1:10000

IP: 1:500-1:5000

## Specificity

Human, Mouse, Rat; other species not tested.

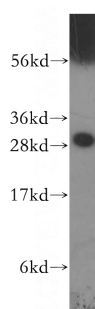
IHC: 1:20-1:200

IF: 1:10-1:100

## Antibody description

14-3-3 epsilon Rabbit Polyclonal antibody. Positive IP detected in A375 cells. Positive WB detected in A375 cells, HeLa cells, human heart tissue. Positive IHC detected in human gliomas tissue. Positive IF detected in HepG2 cells. Positive FC detected in HepG2 cells. Observed molecular weight by Western-blot: 29 kDa

## Validations



## Preparation

This antibody was obtained by immunization of 14-3-3 epsilon recombinant protein (Accession Number: NM\_006761). Purification method: Antigen affinity purified.

A375 cells were subjected to SDS PAGE followed by western blot with Catalog No:107659(14-3-3E antibody) at dilution of 1:500

## Formulation

PBS with 0.1% sodium azide and 50% glycerol pH 7.3.

## Storage

Store at -20°C. DO NOT ALIQUOT

## Clonality

Polyclonal

## Ig Type

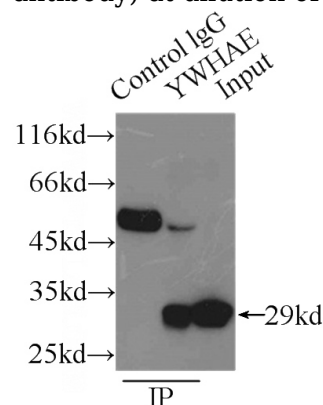
Rabbit IgG

## Applications

ELISA, WB, IHC, IF, IP, FC

## Dilutions

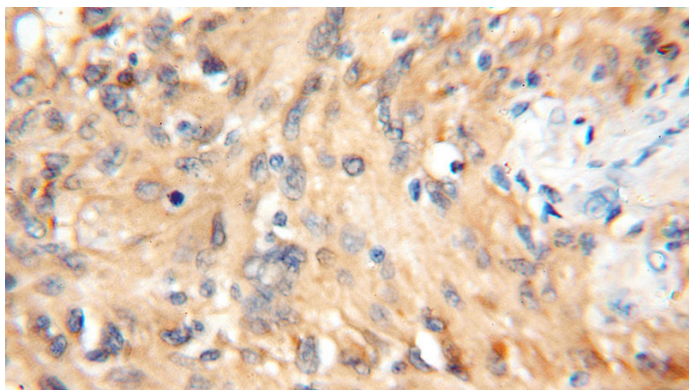
Recommended Dilution:



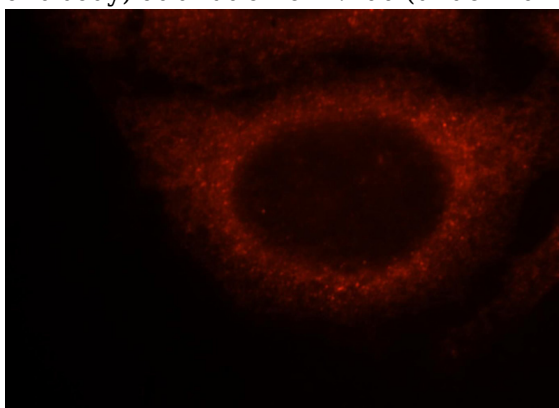
IP Result of anti-14-3-3E (IP:Catalog No:107659, 3ug; Detection:Catalog No:107659 1:1000) with A375 cells lysate 6000ug.

# 14-3-3 epsilon antibody

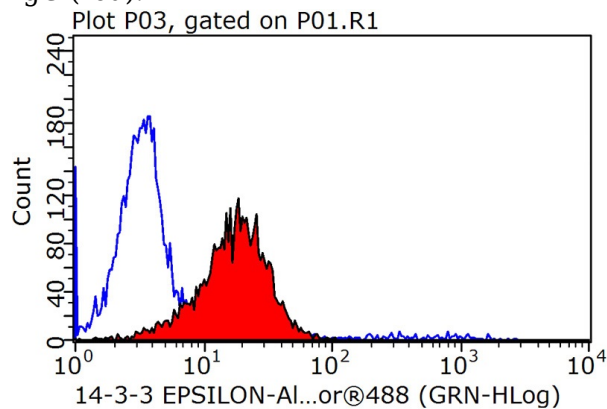
Catalog Number: 107659



Immunohistochemical of paraffin-embedded human gliomas using Catalog No:107659(14-3-3E antibody) at dilution of 1:100 (under 10x lens)



Immunofluorescent analysis of HepG2 cells, using YWHAE antibody Catalog No:107659 at 1:25 dilution and Rhodamine-labeled goat anti-rabbit IgG (red).



$1 \times 10^6$  HepG2 cells were stained with 0.2ug 14-3-3E antibody (Catalog No:107659, red) and control antibody (blue). Fixed with 90% MeOH blocked with 3% BSA (30 min). Alexa Fluor 488-conjugated AffiniPure Goat Anti-Rabbit IgG(H+L) with dilution 1:1000.