

Anti-RPS20 Rabbit antibody



Catalog Number: 167659

Product name

Anti-RPS20 Rabbit antibody

Specificity

Human, Mouse, Rat

Antibody description

RPS20 Rabbit monoclonal antibody

Preparation

Antigen: A synthetic peptide of human RPS20

Formulation

50nM Tris-Glycine(pH 7.4), 0.15M NaCl,
40%Glycerol, 0.01% sodium azide and 0.05% BSA

Storage

Store at 4°C short term. Store at -20°C long term.
Avoid freeze / thaw cycle.

Clonality

Monoclonal

Ig Type

Rabbit IgG

Applications

WB, IHC-P, ICC/IF, FC

Dilutions

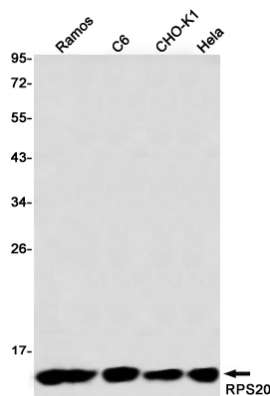
WB: 1/1000

IHC: 1/50

ICC/IF: 1/50

FC: 1/20

Validations



Western blot detection of RPS20 in HeLa, CHO-K1, C6, Ramos using RPS20 Rabbit mAb(1:1000 diluted)