

# JMJD6 Polyclonal Antibody



Catalog Number: 164659

## Product name

JMJD6 Polyclonal Antibody

## Specificity

Human, Mouse, Rat

## Antibody description

Polyclonal antibody to JMJD6

## Preparation

Antigen: Recombinant fusion protein containing a sequence corresponding to amino acids 1-320 of human JMJD6 (NP\_055982.2).

## Formulation

PBS with 0.02% sodium azide, 50% glycerol, pH7.3.

## Storage

Store at -20°C. Avoid freeze / thaw cycles.

## Clonality

Polyclonal

## Ig Type

Rabbit IgG

## Applications

WB, IHC, IF

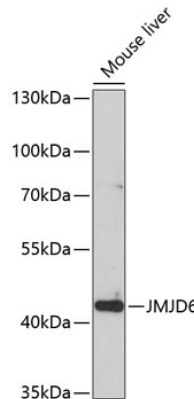
## Dilutions

WB 1:500 - 1:2000

IHC 1:50 - 1:100

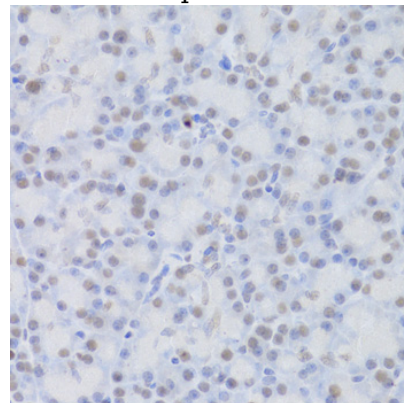
IF 1:50 - 1:100

## Validations



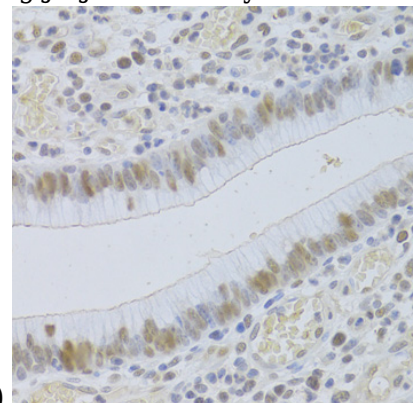
## Western blot - JMJD6 Polyclonal Antibody

Western blot analysis of extracts of mouse liver, using JMJD6 antibody at 1:1000 dilution. Secondary antibody: HRP Goat Anti-Rabbit IgG (H+L) at 1:10000 dilution. Lysates/proteins: 25ug per lane. Blocking buffer: 3% nonfat dry milk in TBST. Detection: ECL Basic Kit. Exposure time: 90s.



## Immunohistochemistry - JMJD6 Polyclonal Antibody

Immunohistochemistry of paraffin-embedded mouse brain using JMJD6 Antibody at dilution of



1:200 (40x lens).

# JMJD6 Polyclonal Antibody

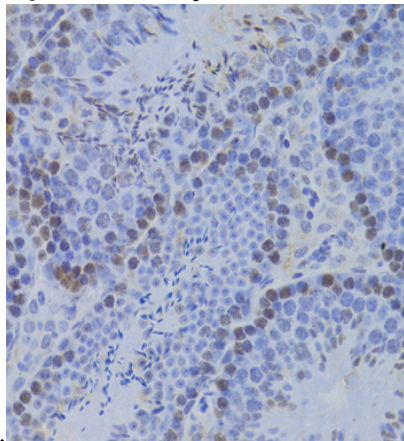


Catalog Number: 164659

---

Immunohistochemistry - JMJD6 Polyclonal Antibody

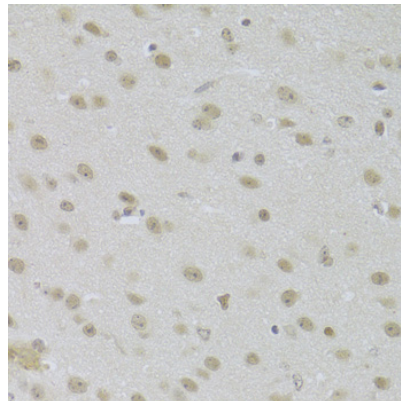
Immunohistochemistry of paraffin-embedded rat pancreas using JMJD6 Antibody at dilution of



1:100 (40x lens).

Immunohistochemistry - JMJD6 Polyclonal Antibody

Immunohistochemistry of paraffin-embedded human gastric cancer using JMJD6 Antibody at dilution of 1:100 (40x lens).



Immunohistochemistry - JMJD6 Polyclonal Antibody

Immunohistochemistry of paraffin-embedded mouse testis using JMJD6 Antibody at dilution of 1:100 (40x lens).