

# MEPE antibody



Catalog Number: 112659

## Product name

MEPE antibody

IP: 1:500-1:5000

IHC: 1:20-1:200

## Specificity

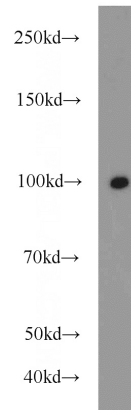
Human; other species not tested.

IF: 1:20-1:200

## Antibody description

MEPE Rabbit Polyclonal antibody. Positive IHC detected in human lung tissue. Positive IF detected in HepG2 cells. Positive IP detected in HeLa cells. Positive WB detected in HeLa cells, MCF7 cells. Observed molecular weight by Western-blot: 98 kDa

## Validations



## Preparation

This antibody was obtained by immunization of MEPE recombinant protein (Accession Number: NM\_020203). Purification method: Antigen affinity purified.

HeLa cells were subjected to SDS PAGE followed by western blot with Catalog No:112659(MEPE antibody) at dilution of 1:1500

## Formulation

PBS with 0.02% sodium azide and 50% glycerol pH 7.3.

## Storage

Store at -20°C. DO NOT ALIQUOT

## Clonality

Polyclonal

## Ig Type

Rabbit IgG

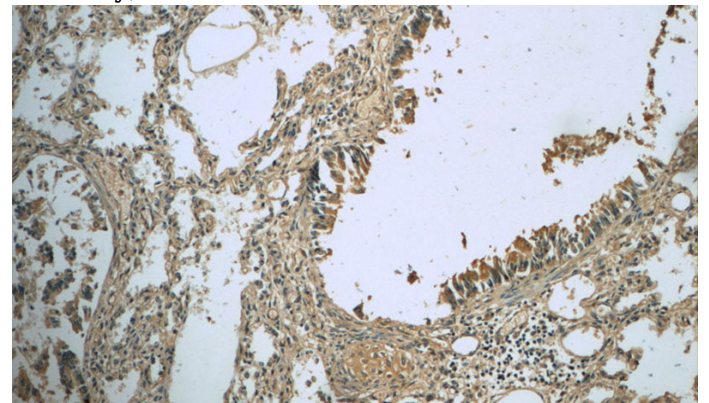
## Applications

ELISA, WB, IHC, IF, IP

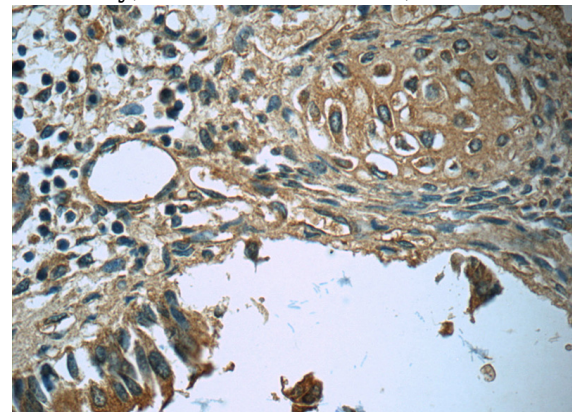
## Dilutions

Recommended Dilution:

WB: 1:500-1:5000



Immunohistochemistry of paraffin-embedded human lung slide using Catalog No:112659(MEPE Antibody) at dilution of 1:50 (under 10x lens)

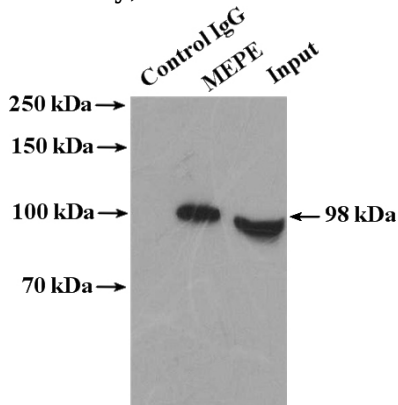


# MEPE antibody

Catalog Number: 112659

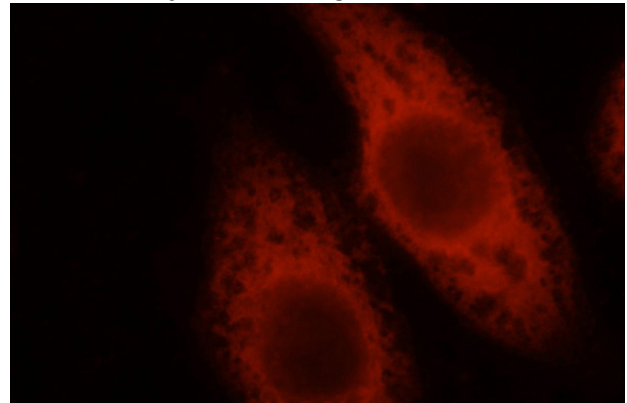
---

Immunohistochemistry of paraffin-embedded human lung slide using Catalog No:112659(MEPE Antibody) at dilution of 1:50 (under 40x lens)



IP Result of anti-MEPE (IP:Catalog No:112659, 4ug; Detection:Catalog No:112659 1:1000) with

HeLa cells lysate 4000ug.



Immunofluorescent analysis of HepG2 cells, using MEPE antibody Catalog No:112659 at 1:50 dilution and Rhodamine-labeled goat anti-rabbit IgG (red).