

Human SLPI (His Tag) recombinant protein



Catalog Number: 501659

General Information

Gene Name Synonym

BLPI; HUSI-1; Mucus proteinase inhibitor; Protease inhibitor WAP4; Secretory leukocyte protease inhibitor; Seminal proteinase inhibitor; WAP four-disulfide core domain protein 4

Protein Construction

A DNA sequence encoding the secreted form of human SLPI (P03973) (Ser 26-Ala 132) was expressed, with a polyhistidine tag at the N-terminus.

Organism

Human

Expression Host

Baculovirus-Insect Cells

QC Testing

Activity

Measured by its ability to inhibit trypsin cleavage of a fluorogenic peptide substrate, Mca-RPKPVE-Nval-WRK (Dnp)-NH₂ (Catalog # ES002). The IC₅₀ value is <4 Nm.

Purity

> 84 % as determined by SDS-PAGE

Endotoxin

< 1.0 EU per µg of the protein as determined by the LAL method

Stability

Samples are stable for up to twelve months from date of receipt at -70°C

Predicted N terminal

Met

Molecular Mass

The recombinant human SLPI consists of 126 amino acids and predicts a molecular mass of 14 kDa. It migrates as an approximately 19 kDa band in SDS-PAGE under reducing conditions.

Formulation

Lyophilized from sterile 20mM Tris, 500mM NaCl, pH 7.4, 10% gly
1. 5 % trehalose and mannitol are added as protectants before lyophilization.
2. Please contact us for any concerns or special requirements.

Usage Guide

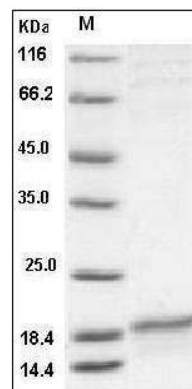
Storage

Store it under sterile conditions at -20°C to -80°C. It is recommended that the protein be aliquoted for optimal storage. Avoid repeated freeze-thaw cycles.

Reconstitution

Adding sterile water, prepare a stock solution of 0.25 mg/ml. Concentration is measured by UV-Vis.

SDS-PAGE



Human SLPI Protein (His Tag) SDS-PAGE