

KRT15 Monoclonal Antibody



Catalog Number: 160659

Product name

KRT15 Monoclonal Antibody

Specificity

Human, Mouse

Antibody description

Monoclonal antibody to KRT15

Preparation

Antigen: Recombinant protein of human KRT15

Formulation

PBS with 0.02% sodium azide, 50% glycerol, pH7.3.

Storage

Store at -20°C. Avoid freeze / thaw cycles.

Clonality

Monoclonal

Ig Type

Rabbit IgG

Applications

WB, IHC, IF

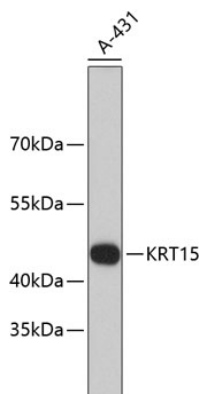
Dilutions

WB 1:500 - 1:2000

IHC 1:50 - 1:200

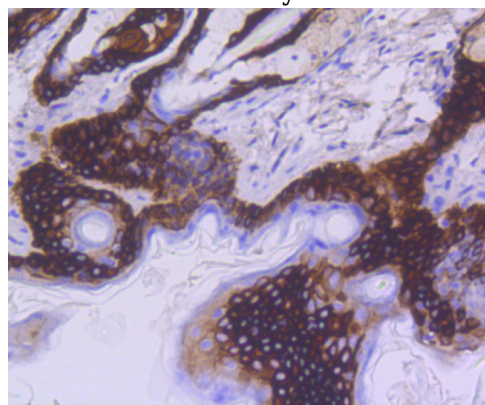
IF 1:50 - 1:200

Validations



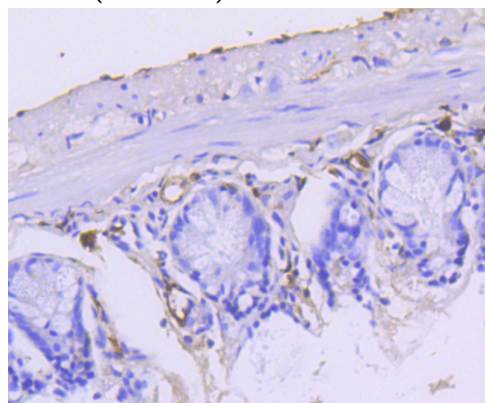
Western blot - KRT15 Monoclonal Antibody

Western blot analysis of extracts of A-431 cells, using KRT15 antibody. Secondary antibody: HRP Goat Anti-Rabbit IgG (H+L) at 1:10000 dilution. Lysates/proteins: 25ug per lane. Blocking buffer: 3% nonfat dry milk in TBST.



Immunohistochemistry - KRT15 Monoclonal Antibody

Immunohistochemistry of paraffin-embedded mouse skin using KRT15 antibody at dilution of 1:100 (40x lens).



KRT15 Monoclonal Antibody



Catalog Number: 160659

Immunohistochemistry - KRT15 Monoclonal Antibody

Immunohistochemistry of paraffin-embedded mouse intestine using KRT15 antibody at dilution of 1:100 (40x lens).