

# Hemoglobin epsilon-Specific antibody



Catalog Number: 107259

## Product name

Hemoglobin epsilon-Specific antibody

## Specificity

Human; other species not tested.

## Antibody description

Hemoglobin epsilon-Specific Mouse Monoclonal antibody. Positive FC detected in K-562 cells. Positive WB detected in K-562 cells. Observed molecular weight by Western-blot: 16 kDa

## Preparation

This antibody was obtained by immunization of recombinant protein (Accession Number: NM\_005330). Purification method: Protein G purified.

## Formulation

PBS with 0.02% sodium azide and 50% glycerol pH 7.3.

## Storage

Store at -20°C. DO NOT ALIQUOT

## Clonality

Monoclonal

## Ig Type

Mouse IgG1

## Applications

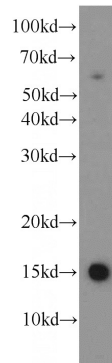
ELISA, WB, FC

## Dilutions

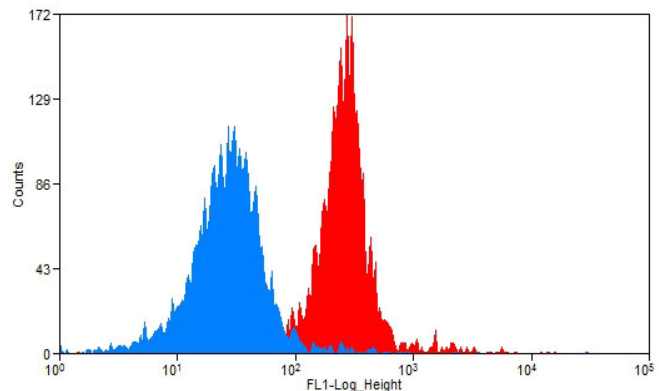
Recommended Dilution:

WB: 1:200-1:2000

## Validations



K-562 cells were subjected to SDS PAGE followed by western blot with Catalog No:107259(HBE1-Specific antibody) at dilution of 1:500



1X10<sup>6</sup> K-562 cells were stained with 0.2ug HBE1-Specific antibody (Catalog No:107259, red) and control antibody (blue). Fixed with blocked with 3% BSA (30 min). Alexa Fluor 488-conjugated AffiniPure Goat Anti-Mouse IgG(H+L) with dilution 1:1500.