

General Information

Gene Name Synonym

CEK7-ligand; ELF-1; EPH-related receptor tyrosine kinase ligand 6

Protein Construction

A DNA sequence encoding the mouse EFNA2 (NP_031935.3) without the pro peptide (Met 1-Asn 184) was expressed and purified, with additional seven amino acid (ALEVLFQ) at the C-terminus.

Organism

Mouse

Expression Host

Human Cells

QC Testing

Activity

1. Measured by its binding ability in a functional ELISA.
2. Immobilized recombinant Coating: Mouse EFNA2 (native) (cat: 504259) at 10µg/ml (100 µl/well) can bind Mouse EphA4-Fc (cat: 501692) with a linear range of 1.25-10 µg/mL.

Purity

> 97 % as determined by SDS-PAGE

Endotoxin

< 1.0 EU per µg of the protein as determined by the LAL method

Stability

Samples are stable for up to twelve months from date of receipt at -70°C

Predicted N terminal

Glu 23

Molecular Mass

The recombinant mouse EFNA2 consists of 169 amino acids and has a predicted molecular mass of 19.4 kDa. In SDS-PAGE under reducing conditions, the apparent molecular mass of rmEFNA2 is approximately 28 kDa due to glycosylation.

Formulation

- Lyophilized from sterile PBS, pH 7.4
1. 5 % trehalose and mannitol are added as protectants before lyophilization.
 2. Please contact us for any concerns or special requirements.

Usage Guide

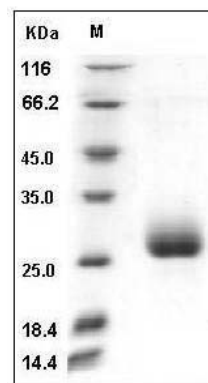
Storage

Store it under sterile conditions at -20°C to -80°C. It is recommended that the protein be aliquoted for optimal storage. Avoid repeated freeze-thaw cycles.

Reconstitution

Adding sterile water, prepare a stock solution of 0.25 mg/ml. Concentration is measured by UV-Vis.

SDS-PAGE



Mouse Ephrin-A2 / EFNA2 Protein SDS-PAGE