

# Anti-CIB2 antibody



Catalog Number: 104259

## Product name

Anti-CIB2 antibody

## Immunogen

[Human CIB2 \(His Tag\) recombinant protein](#)

## Specificity

Human CIB2

## Antibody description

Rabbit monoclonal to CIB2

## Preparation

This antibody was obtained from a rabbit immunized with purified, recombinant Human CIB2 (rh CIB2; O75838; Met 1-Ile 187).

## Formulation

0.2 µm filtered solution in PBS with 5% trehalose

## Storage

This antibody can be stored at 2°C-8°C for one month without detectable loss of activity. Antibody products are stable for twelve months from date of receipt when stored at -20°C to -80°C.

Preservative-Free.

Sodium azide is recommended to avoid contamination (final concentration 0.05%-0.1%). It is toxic to cells and should be disposed of properly. Avoid repeated freeze-thaw cycles.

## Clonality

Monoclonal

## Ig Type

Rabbit IgG

## Applications

ELISA, IHC-P

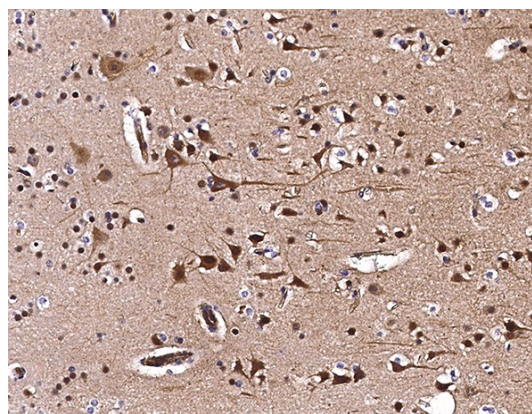
## Dilutions

ELISA: 0.1-0.2 µg/mL

This antibody can be used at 0.1-0.2 µg/mL with the appropriate secondary reagents to detect Human CIB2. The detection limit for Human CIB2 is approximately 0.00975 ng/well.

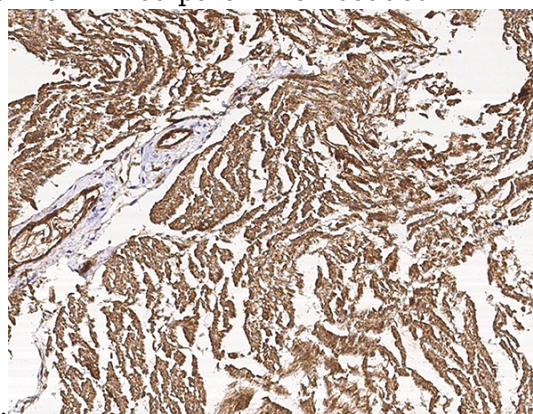
IHC-P: 0.2-1 µg/mL

## Validations



CIB2 Antibody, Rabbit MAb, Immunochemistry

Immunochemical staining of human CIB2 in human brain with rabbit monoclonal antibody (0.5 µg/mL, formalin-fixed paraffin embedded



sections).

CIB2 Antibody, Rabbit MAb, Immunochemistry

Immunochemical staining of human CIB2 in human heart with rabbit monoclonal antibody (0.5 µg/mL, formalin-fixed paraffin embedded sections).