

Anti-ATXN7L3 antibody



Catalog Number: 141259

Product name

Anti-ATXN7L3 antibody

Specificity

Human ATXN7L3

Antibody description

Rabbit Polyclonal to Human ATXN7L3

Preparation

Produced in rabbits immunized with a synthetic peptide corresponding to the center region of the Human ATXN7L3, and purified by antigen affinity chromatography.

Formulation

0.2 µm filtered solution in PBS

Storage

This antibody can be stored at 2°C-8°C for one month without detectable loss of activity. Antibody products are stable for twelve months from date of receipt when stored at -20°C to -80°C.

Preservative-Free.

Sodium azide is recommended to avoid contamination (final concentration 0.05%-0.1%). It is toxic to cells and should be disposed of properly. Avoid repeated freeze-thaw cycles.

Clonality

Polyclonal

Ig Type

Rabbit IgG

Applications

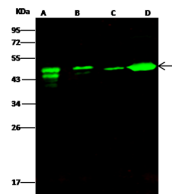
WB, IP

Dilutions

WB: 5-20 µg/ml

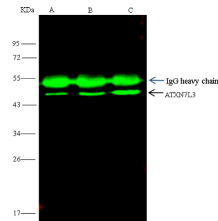
IP: 4-8 uL/mg of lysate

Validations



Lanes	A	B	C	D
Items				
Sample (whole cell lysate)	Jurkat	Raji	K562	THP1
Sample Volume (µg/lane)	30	30	30	30
Gel	13% SDS-PAGE reducing gel			
Recommended Concentration	5-20 µg/ml			
Secondary Antibody	DyLight 800 labeled Antibody to Rabbit IgG (H+L), at 1:5000 dilution.			
Explanation	Developed using Odyssey imaging system. Predicted band size : 39 kDa Observed band size : 49 kDa Additional bands at : 40 kDa and 46 kDa (We are unsure as to the identity of these extra bands.)			

Human ATXN7L3 Western blot (WB) 14925



Lanes	A	B	C
Items			
Sample (whole cell lysate)	Raji	K562	THP-1
Sample quantity	0.5 mg		
IP antibody quantity	4 µL		
Protein G agarose	15 µl of 50% Protein G Agarose		
Gel	13% SDS-PAGE reducing gel		
Primary antibody	KLB-SMCC-SINO2151+KLB-SMCC-SINO2150 antibody at 10 µg/ml		
Secondary antibody	DyLight 800-labeled antibody to rabbit IgG (H+L), at 1:5000 dilution		

Human ATXN7L3 Immunoprecipitation(IP) 14926