

# S100A16 antibody

Catalog Number: 114959

## Product name

S100A16 antibody

IHC: 1:50-1:500

IF: 1:50-1:500

## Specificity

Human; other species not tested.

## Antibody description

S100A16 Rabbit Polyclonal antibody. Positive WB detected in A431 cells, Transfected HEK-293 cells. Positive IHC detected in human lung cancer tissue, human colon cancer tissue. Positive IF detected in MCF-7 cells. Observed molecular weight by Western-blot: 9-12 kDa

## Preparation

This antibody was obtained by immunization of S100A16 recombinant protein (Accession Number: NM\_080388). Purification method: Antigen affinity purified.

## Formulation

PBS with 0.1% sodium azide and 50% glycerol pH 7.3.

## Storage

Store at -20°C. DO NOT ALIQUOT

## Clonality

Polyclonal

## Ig Type

Rabbit IgG

## Applications

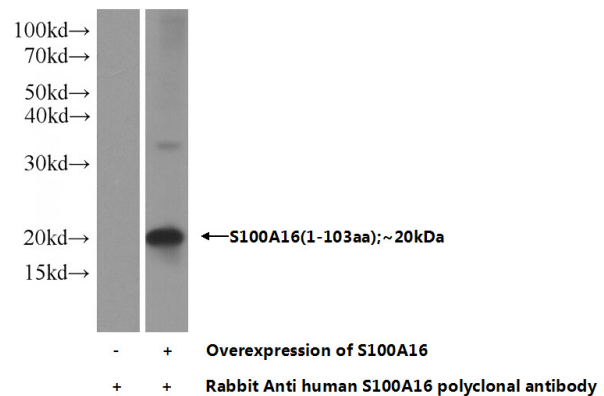
ELISA, WB, IHC, IF

## Dilutions

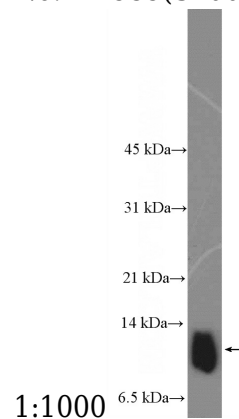
Recommended Dilution:

WB: 1:200-1:1000

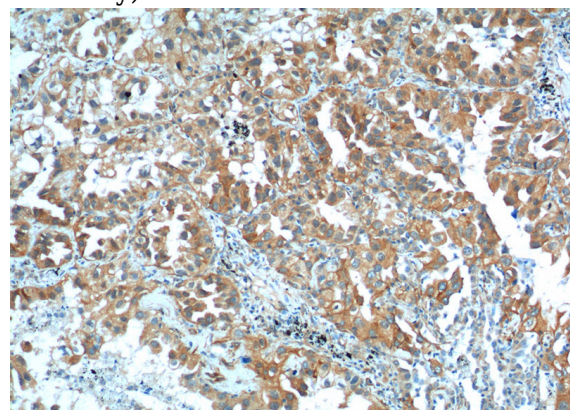
## Validations



Transfected HEK-293 cells were subjected to SDS PAGE followed by western blot with Catalog No:114959(S100A16 Antibody) at dilution of



A431 cells were subjected to SDS PAGE followed by western blot with Catalog No:114959(S100A16 Antibody) at dilution of 1:300

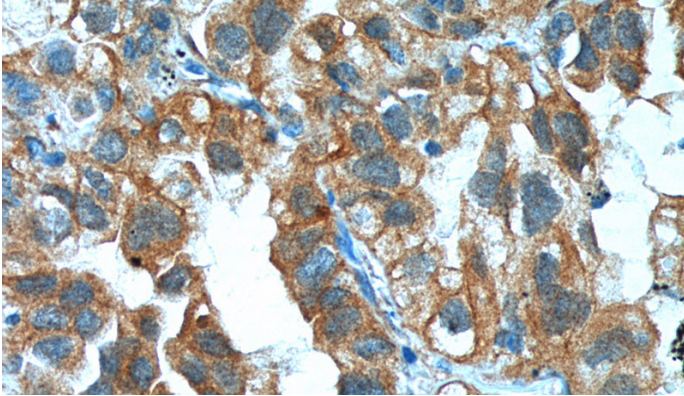


Immunohistochemistry of paraffin-embedded

# S100A16 antibody

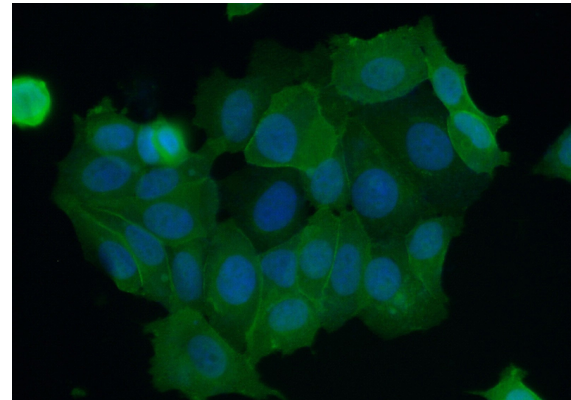
Catalog Number: 114959

human lung cancer tissue slide using Catalog No:114959(S100A16 Antibody) at dilution of 1:200 (under 10x lens).



Immunohistochemistry of paraffin-embedded human lung cancer tissue slide using Catalog No:114959(S100A16 Antibody) at dilution of 1:200

(under 40x lens).



Immunofluorescent analysis of (10% Formaldehyde) fixed MCF-7 cells using Catalog No:114959(S100A16 Antibody) at dilution of 1:50 and Alexa Fluor 488-conjugated AffiniPure Goat Anti-Rabbit IgG(H+L)