

NAT1 antibody

Catalog Number: 112959

Product name

NAT1 antibody

Immunogen

[Human NAT1 Recombinant protein \(His tag\)](#)

Specificity

human, mouse, rat; other species not tested.

Antibody description

NAT1 Rabbit Polyclonal antibody. Positive IHC detected in human breast cancer. Positive IF detected in Hela. Positive WB detected in PC-3 cells, A375 cells, human placenta tissue. Observed molecular weight by Western-blot: 32-34kd

Preparation

This antibody was obtained by immunization of NAT1 recombinant protein (Accession Number: NM_001160171). Purification method: Antigen affinity purified.

Formulation

PBS with 0.02% sodium azide and 50% glycerol pH 7.3.

Storage

Store at -20°C. DO NOT ALIQUOT

Clonality

Polyclonal

Ig Type

Rabbit IgG

Applications

ELISA, WB, IHC, IF

Dilutions

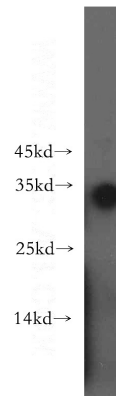
Recommended Dilution:

WB: 1:200-1:2000

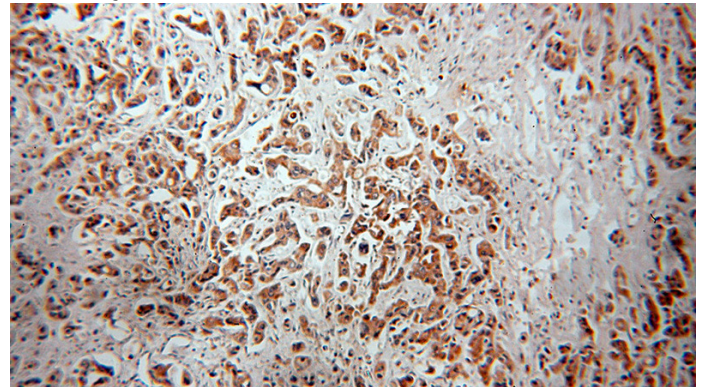
IHC: 1:20-1:200

IF: 1:10-1:100

Validations



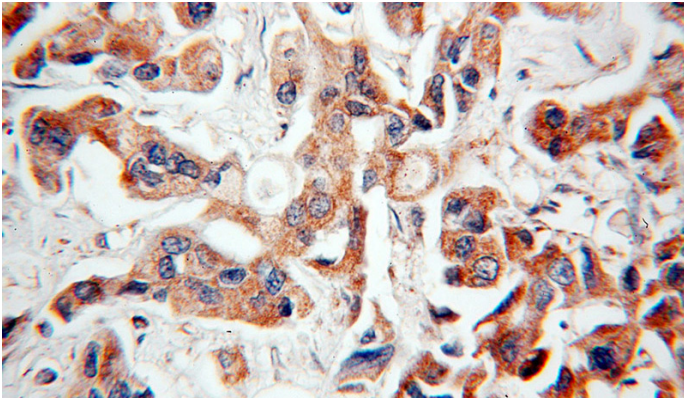
PC-3 cells were subjected to SDS PAGE followed by western blot with Catalog No:112959(NAT1 antibody) at dilution of 1:500



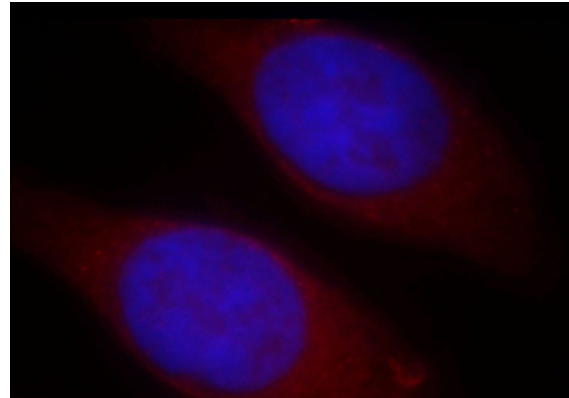
Immunohistochemical of paraffin-embedded human breast cancer using Catalog No:112959(NAT1 antibody) at dilution of 1:100 (under 10x lens)

NAT1 antibody

Catalog Number: 112959



Immunohistochemical of paraffin-embedded human breast cancer using Catalog No:112959(NAT1 antibody) at dilution of 1:100 (under 40x lens)



Immunofluorescent analysis of HeLa cells, using NAT1 antibody Catalog No:112959 at 1:25 dilution and Rhodamine-labeled goat anti-rabbit IgG (red). Blue pseudocolor = DAPI (fluorescent DNA dye).