

Canine IL-21 recombinant protein



Catalog Number: 502959

General Information

Protein Construction

A DNA sequence encoding the canine IL21 (Q6L7I9) (His 18-Ser 146) was expressed, with an initial Met at the N-terminus.

Organism

Canine

Expression Host

E. coli

QC Testing

Activity

Measured by its ability to induced Interferon gamma secretion by human natural killer lymphoma NK-92 cells.
The ED₅₀ for this effect is typically 0.4-2 ng/ml.

Purity

> 97 % as determined by SDS-PAGE

Endotoxin

Please contact us for more information.

Stability

Samples are stable for up to twelve months from date of receipt at -70°C

Predicted N terminal

Met

Molecular Mass

The recombinant canine IL21 consists of 130 amino acids and has a calculated molecular mass of 15 kDa. In SDS-PAGE under reducing conditions, it migrates as an approximately 15KDa band as predicted.

Formulation

Lyophilized from sterile PBS, pH 7.4

1. 5 % trehalose and mannitol are added as protectants before lyophilization.

2. Please contact us for any concerns or special requirements.

Usage Guide

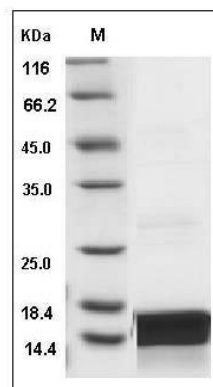
Storage

Store it under sterile conditions at -20°C to -80°C. It is recommended that the protein be aliquoted for optimal storage. Avoid repeated freeze-thaw cycles.

Reconstitution

Adding sterile water, prepare a stock solution of 0.25 mg/ml. Concentration is measured by UV-Vis.

SDS-PAGE



Canine IL21 / Interleukin 21 Protein SDS-PAGE