

# Anti-Glucosamine (N-acetyl)-6-Sulfatase antibody



Catalog Number: 102959

## Product name

Monoclonal

Anti-Glucosamine (N-acetyl)-6-Sulfatase antibody

## Ig Type

## Specificity

Rabbit IgG

Human GNS / G6S

## Applications

## Antibody description

ELISA, WB

Rabbit monoclonal to Glucosamine (N-acetyl)-6-Sulfatase

## Dilutions

WB: 2-10  $\mu\text{g}/\text{mL}$

## Preparation

ELISA: 0.1-0.2  $\mu\text{g}/\text{mL}$

This antibody was obtained from a rabbit immunized with purified, recombinant Human GNS / G6S (rhGNS; NP\_002067.1; Met 1-Leu 552).

This antibody can be used at 0.1-0.2  $\mu\text{g}/\text{mL}$  with the appropriate secondary reagents to detect Human GNS. The detection limit for Human GNS is approximately 0.00245 ng/well.

## Formulation

0.2  $\mu\text{m}$  filtered solution in PBS with 5% trehalose

## Validations

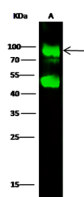
## Storage

This antibody can be stored at 2°C-8°C for one month without detectable loss of activity. Antibody products are stable for twelve months from date of receipt when stored at -20°C to -80°C.

Preservative-Free.

Sodium azide is recommended to avoid contamination (final concentration 0.05%-0.1%). It is toxic to cells and should be disposed of properly. Avoid repeated freeze-thaw cycles.

## Clonality



Items	Lanes	A
Sample (whole cell lysate)		PC3
Sample Volume ( $\mu\text{g}/\text{lane}$ )		60
Gel		13% SDS-PAGE reducing gel
Recommended Concentration		2-10 $\mu\text{g}/\text{ml}$
Secondary Antibody		Dylight 800-labeled Antibody To Rabbit IgG (H+L), at 1:5000 dilution.

Glucosamine (N-acetyl)-6-Sulfatase / G6S Antibody, Rabbit MAb, Western blot