

ITPKC antibody



Catalog Number: 111959

Product name

ITPKC antibody

WB: 1:200-1:2000

IP: 1:200-1:1000

Specificity

Human; other species not tested.

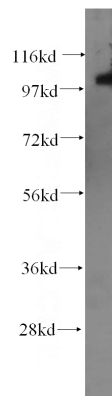
IHC: 1:20-1:200

IF: 1:20-1:200

Antibody description

ITPKC Rabbit Polyclonal antibody. Positive IF detected in HepG2 cells. Positive IHC detected in human skeletal muscle tissue, human heart tissue, human lymphoma tissue. Positive WB detected in human heart tissue. Positive IP detected in HepG2 cells. Observed molecular weight by Western-blot: 100-105 kDa

Validations



Preparation

This antibody was obtained by immunization of ITPKC recombinant protein (Accession Number: XM_047439466). Purification method: Antigen affinity purified.

human heart tissue were subjected to SDS PAGE followed by western blot with Catalog No:111959(ITPKC antibody) at dilution of 1:400

Formulation

PBS with 0.02% sodium azide and 50% glycerol pH 7.3.

Storage

Store at -20°C. DO NOT ALIQUOT

Clonality

Polyclonal

Ig Type

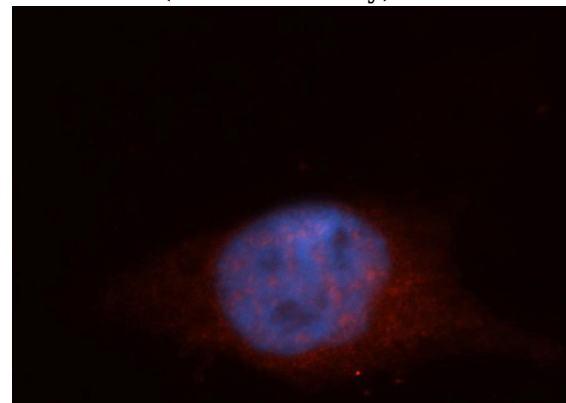
Rabbit IgG

Applications

ELISA, WB, IF, IHC, IP

Dilutions

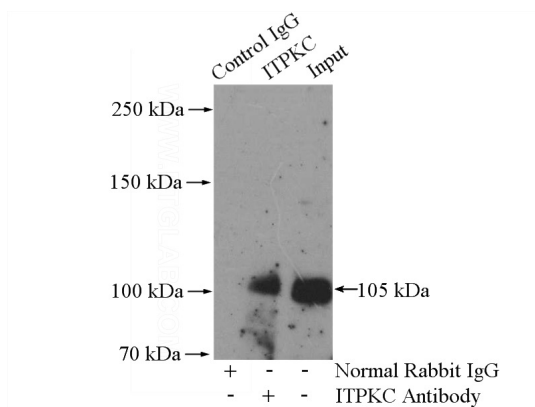
Recommended Dilution:



Immunofluorescent analysis of HepG2 cells, using ITPKC antibody Catalog No:111959 at 1:50 dilution and Rhodamine-labeled goat anti-rabbit IgG (red). Blue pseudocolor = DAPI (fluorescent

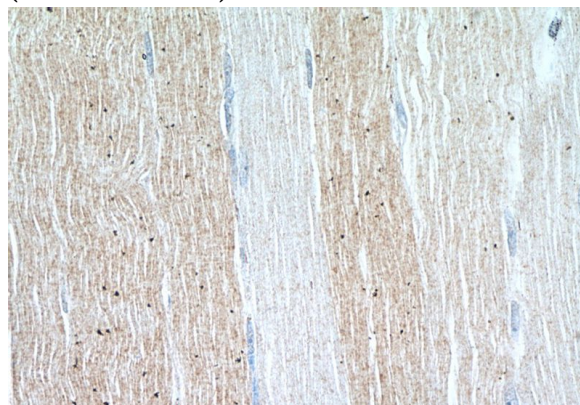
ITPKC antibody

Catalog Number: 111959



DNA dye).

Immunohistochemistry of paraffin-embedded human skeletal muscle tissue slide using Catalog No:111959(ITPKC Antibody) at dilution of 1:50 (under 10x lens)



Immunohistochemistry of paraffin-embedded human skeletal muscle tissue slide using Catalog No:111959(ITPKC Antibody) at dilution of 1:50 (under 40x lens)

