

GGCX antibody



Catalog Number: 110959

Product name

GGCX antibody

WB: 1:1000-1:10000

IP: 1:1000-1:10000

Specificity

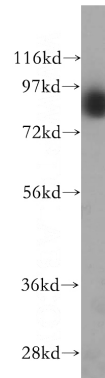
Human, Mouse, Rat; other species not tested.

IHC: 1:20-1:200

Antibody description

GGCX Rabbit Polyclonal antibody. Positive IHC detected in human liver tissue, human brain tissue. Positive WB detected in MCF7 cells, HEK-293 cells, HepG2 cells, L02 cells, mouse liver tissue, PC-3 cells. Positive IP detected in mouse liver tissue. Observed molecular weight by Western-blot: 88 kDa

Validations



Preparation

This antibody was obtained by immunization of GGCX recombinant protein (Accession Number: NM_000821). Purification method: Antigen affinity purified.

MCF7 cells were subjected to SDS PAGE followed by western blot with Catalog No:110959(GGCX antibody) at dilution of 1:2000

Formulation

PBS with 0.02% sodium azide and 50% glycerol pH 7.3.

Storage

Store at -20°C. DO NOT ALIQUOT

Clonality

Polyclonal

Ig Type

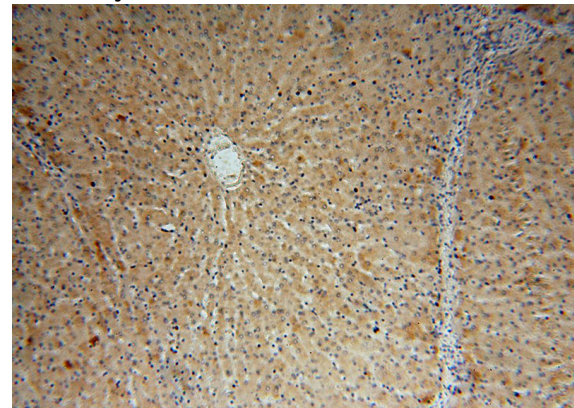
Rabbit IgG

Applications

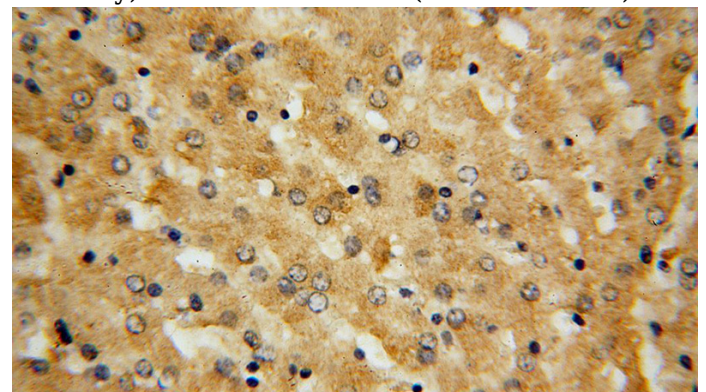
ELISA, WB, IHC, IP

Dilutions

Recommended Dilution:



Immunohistochemical of paraffin-embedded human liver using Catalog No:110959(GGCX antibody) at dilution of 1:100 (under 10x lens)



GGCX antibody

Catalog Number: 110959

Immunohistochemical of paraffin-embedded human liver using Catalog No:110959(GGCX antibody) at dilution of 1:100 (under 40x lens)

IP Result of anti-GGCX (IP:Catalog No:110959, 4ug; Detection:Catalog No:110959 1:2000) with mouse liver tissue lysate 4000ug.

