

BZW1 antibody

Catalog Number: 108559

Product name

BZW1 antibody

IHC: 1:20-1:200

IF: 1:10-1:100

Specificity

human, mouse, rat; other species not tested.

Validations

Antibody description

BZW1 Rabbit Polyclonal antibody. Positive WB detected in MCF7 cells, HeLa cells. Positive IF detected in Hela. Positive IHC detected in human testis. Observed molecular weight by Western-blot: 48kd



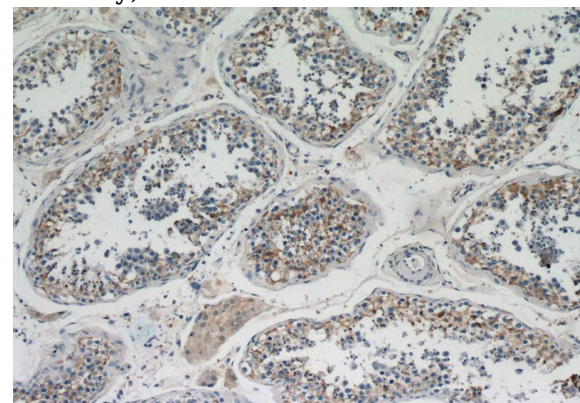
Preparation

This antibody was obtained by immunization of BZW1 recombinant protein (Accession Number: NM_014670). Purification method: Antigen affinity purified.

MCF7 cells were subjected to SDS PAGE followed by western blot with Catalog No:108559(BZW1 antibody) at dilution of 1:500

Formulation

PBS with 0.02% sodium azide and 50% glycerol pH 7.3.



Storage

Store at -20°C. DO NOT ALIQUOT

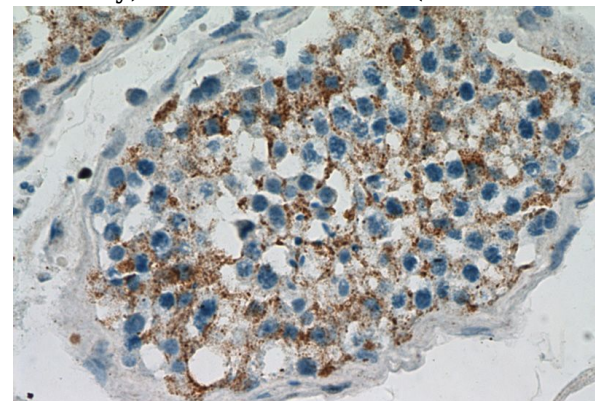
Clonality

Polyclonal

Immunohistochemical of paraffin-embedded human testis using Catalog No:108559(BZW1 antibody) at dilution of 1:100 (under 10x lens)

Ig Type

Rabbit IgG



Applications

ELISA, WB, IHC, IF

Dilutions

Recommended Dilution:

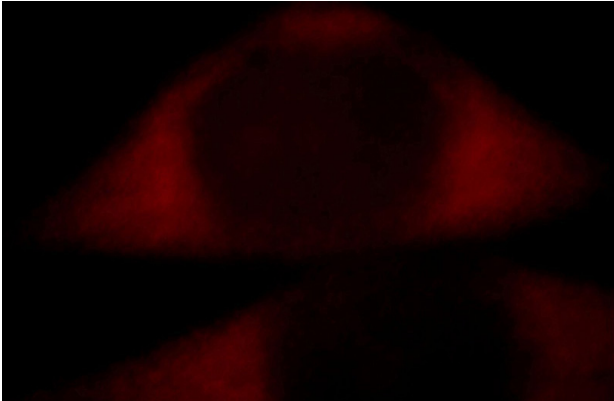
WB: 1:500-1:5000

Immunohistochemical of paraffin-embedded human testis using Catalog No:108559(BZW1

BZW1 antibody

Catalog Number: 108559

antibody) at dilution of 1:100 (under 40x lens)



Immunofluorescent analysis of HeLa cells, using BZW1 antibody Catalog No:108559 at 1:25 dilution and Rhodamine-labeled goat anti-rabbit IgG (red).