

SPCS2 antibody

Catalog Number: 115559

Product name

SPCS2 antibody

Specificity

Human, Mouse, Rat; other species not tested.

Antibody description

SPCS2 Rabbit Polyclonal antibody. Positive IP detected in mouse colon tissue. Positive WB detected in human colon tissue. Observed molecular weight by Western-blot: 25 kDa

Preparation

This antibody was obtained by immunization of SPCS2 recombinant protein (Accession Number: NM_014752). Purification method: Antigen affinity purified.

Formulation

PBS with 0.02% sodium azide and 50% glycerol pH 7.3.

Storage

Store at -20°C. DO NOT ALIQUOT

Clonality

Polyclonal

Ig Type

Rabbit IgG

Applications

ELISA, WB, IP

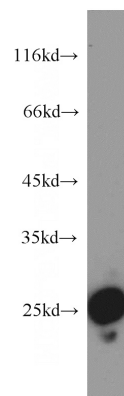
Dilutions

Recommended Dilution:

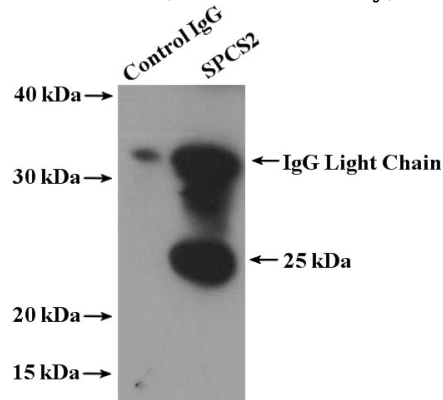
WB: 1:500-1:5000

IP: 1:200-1:2000

Validations



human colon tissue were subjected to SDS PAGE followed by western blot with Catalog No:115559 (SPCS2 antibody) at dilution of 1:1200



IP Result of anti-SPCS2 (IP: Catalog No:115559, 4ug; Detection: Catalog No:115559 1:500) with mouse colon tissue lysate 4000ug.