

Anti-LRRC25 antibody



Catalog Number: 175559

Product name

Anti-LRRC25 antibody

Specificity

Human

Antibody description

Rabbit polyclonal antibody to LRRC25

Preparation

This antigen of this antibody was klh conjugated synthetic peptide derived from human lrcc25 81-180/305

Formulation

Liquid, 0.01M TBS(pH7.4) with 1% BSA, 0.03% Proclin300 and 50% Glycerol.

Storage

Store at -20°C for one year. Avoid repeated freeze/thaw cycles. The lyophilized antibody is stable at room temperature for at least one month and for greater than a year when kept at -20°C. When reconstituted in sterile pH 7.4 0.01M PBS or diluent of antibody the antibody is stable for at least two weeks at 2-4°C.

Clonality

Polyclonal

Ig Type

Rabbit IgG

Applications

WB

Dilutions

WB:1:500-2000

Validations

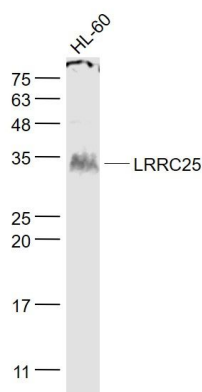


Fig1: Sample:; HL-60(Human) Cell Lysate at 30 ug; Primary: Anti- LRRC25 at 1/1000 dilution; Secondary: IRDye800CW Goat Anti-Rabbit IgG at 1/20000 dilution; Predicted band size: 31 kD; Observed band size: 31 kD