

RBP1 antibody

Catalog Number: 114559

Product name

RBP1 antibody

WB: 1:500-1:5000

IHC: 1:20-1:200

Specificity

Human, Mouse, Rat; other species not tested.

Antibody description

RBP1 Rabbit Polyclonal antibody. Positive WB detected in HEK-293 cells, human brain tissue, human liver tissue. Positive IHC detected in human pancreas tissue, human ovary tissue. Observed molecular weight by Western-blot: 14-21 kDa

Preparation

This antibody was obtained by immunization of RBP1 recombinant protein (Accession Number: NM_001365940). Purification method: Antigen affinity purified.

Formulation

PBS with 0.02% sodium azide and 50% glycerol pH 7.3.

Storage

Store at -20°C. DO NOT ALIQUOT

Clonality

Polyclonal

Ig Type

Rabbit IgG

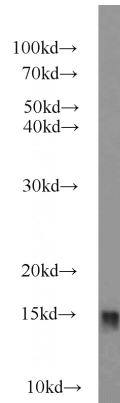
Applications

ELISA, WB, IHC

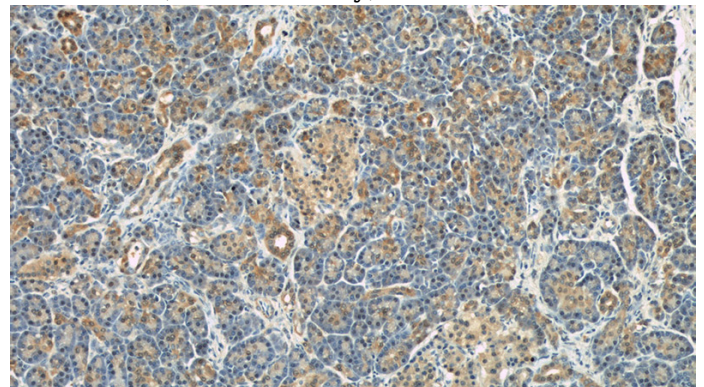
Dilutions

Recommended Dilution:

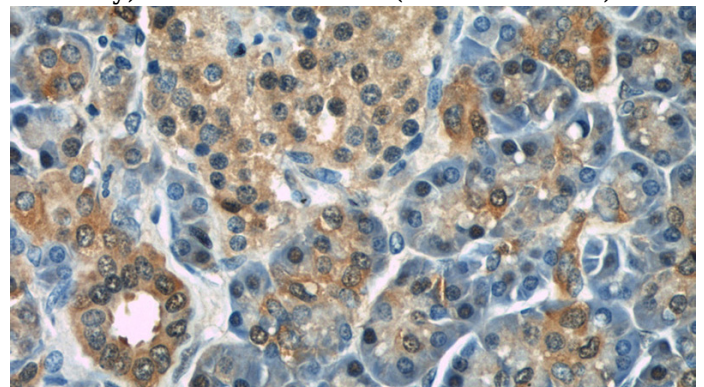
Validations



HEK-293 cells were subjected to SDS PAGE followed by western blot with Catalog No:114559(RBP1 antibody) at dilution of 1:1000



Immunohistochemical of paraffin-embedded human pancreas using Catalog No:114559(RBP1 antibody) at dilution of 1:50 (under 10x lens)



Immunohistochemical of paraffin-embedded human pancreas using Catalog No:114559(RBP1 antibody) at dilution of 1:50 (under 40x lens)