

Anti-PTEN Rabbit antibody



Catalog Number: 167159

Product name

Anti-PTEN Rabbit antibody

Specificity

Rat, Mouse

Antibody description

PTEN Rabbit polyclonal antibody

Preparation

Antigen: CDHYRYSDDTSDP

Formulation

10mM PBS with 0.02% sodium azide 50% glycerol.

Storage

Store at 4°C short term. Store at -20°C long term.
Avoid freeze / thaw cycle.

Clonality

Polyclonal

Ig Type

Rabbit IgG

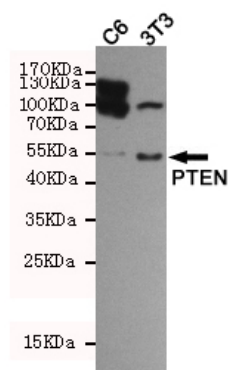
Applications

WB

Dilutions

WB: 1/1000

Validations



Western blot detection of PTEN in C6 and 3T3 cell lysates using PTEN Rabbit pAb (dilution 1:1000). Predicted band size: 47kDa. Observed band size: 54kDa.