

gamma Tubulin antibody

Catalog Number: 110859

Product name

gamma Tubulin antibody

IP: 1:1000-1:10000

IF: N/A

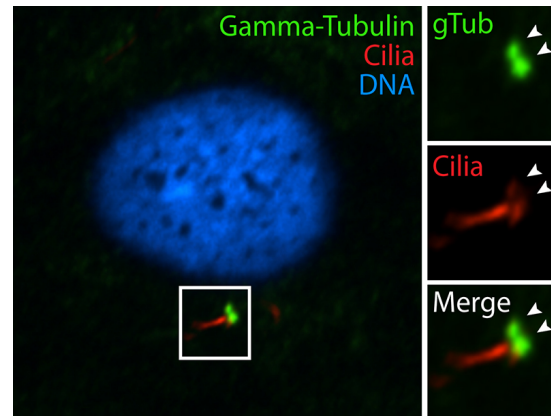
Specificity

Human, Mouse, Rat, Dog; other species not tested.

Validations

Antibody description

gamma Tubulin Rabbit Polyclonal antibody. Positive IF detected in hTERT-RPE cells, MDCK cells. Positive IP detected in HeLa cells. Positive WB detected in HeLa cells, Transfected HEK-293 cells. Observed molecular weight by Western-blot: 50-55 kDa



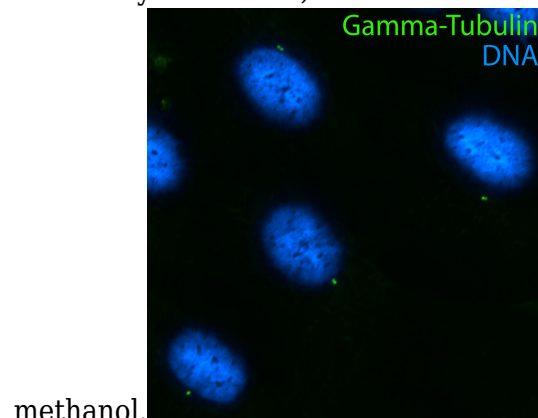
Preparation

This antibody was obtained by immunization of gamma Tubulin recombinant protein (Accession Number: NM_001070). Purification method: Antigen affinity purified.

IF results of gamma tubulin antibody (Catalog No:110859, 1:100) with hTERT-RPE cells by Moshe Kim (laboratory of Dr. William S Trimble, University of Toronto). Cells were fixed in ice-cold

Formulation

PBS with 0.1% sodium azide and 50% glycerol pH 7.3.



Storage

Store at -20°C. DO NOT ALIQUOT

methanol.

Clonality

Polyclonal

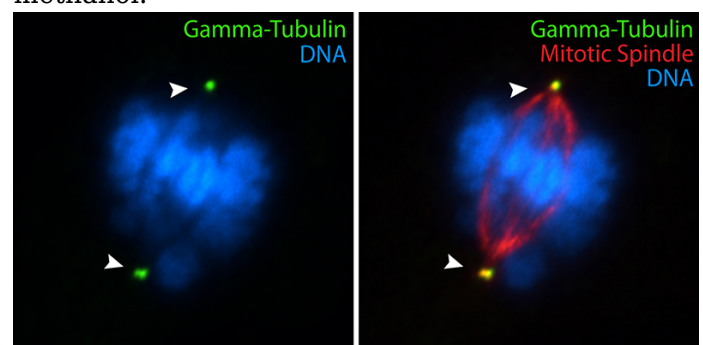
IF results of gamma tubulin antibody (Catalog No:110859, 1:100) with hTERT-RPE cells by Moshe Kim (laboratory of Dr. William S Trimble, University of Toronto). Cells were fixed in ice-cold methanol.

Ig Type

Rabbit IgG

Applications

ELISA, IF, WB, IP



Dilutions

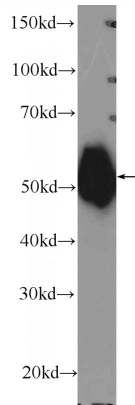
Recommended Dilution:

WB: 1:200-1:2000

gamma Tubulin antibody

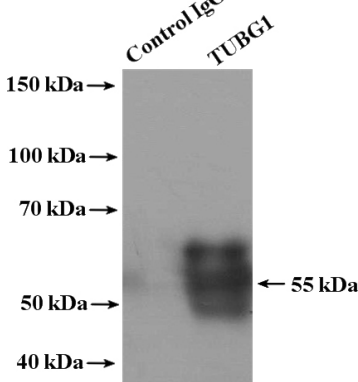
Catalog Number: 110859

IF results of gamma tubulin antibody (Catalog No:110859, 1:100) with hTERT-RPE cells by Moshe Kim (laboratory of Dr. William S Trimble, University of Toronto). Cells were fixed in ice-cold

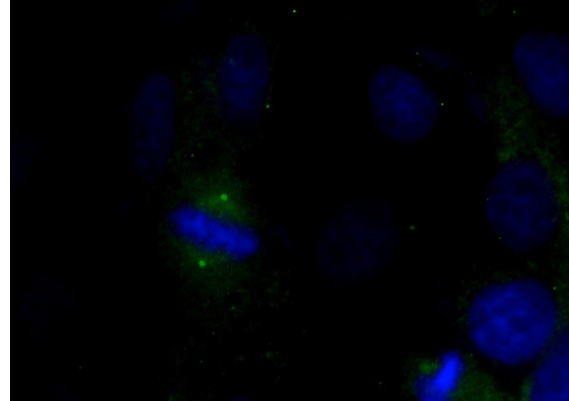


methanol.

HeLa cells were subjected to SDS PAGE followed by western blot with Catalog No:110859(tubulin-gamma Antibody) at dilution of 1:600



IP Result of anti-tubulin-gamma (IP:Catalog No:110859, 4ug; Detection:Catalog No:110859 1:2000) with HeLa cells lysate 1600ug.



Immunofluorescent analysis of MDCK cells using Catalog No:110859(tubulin-gamma Antibody) at dilution of 1:50 and Alexa Fluor 488-conjugated AffiniPure Goat Anti-Rabbit IgG(H+L)