

# COPG2 antibody



Catalog Number: 109459

## Product name

COPG2 antibody

WB: 1:500-1:5000

IHC: 1:20-1:200

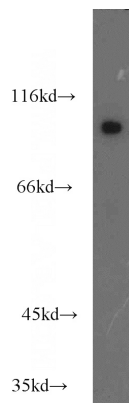
## Specificity

Human, Mouse; other species not tested.

## Validations

## Antibody description

COPG2 Rabbit Polyclonal antibody. Positive WB detected in mouse heart tissue, HeLa cells, human brain tissue, human heart tissue, human skeletal muscle tissue, mouse brain tissue, mouse kidney tissue. Positive IHC detected in human heart tissue, human cerebellum tissue. Observed molecular weight by Western-blot: 98 kDa



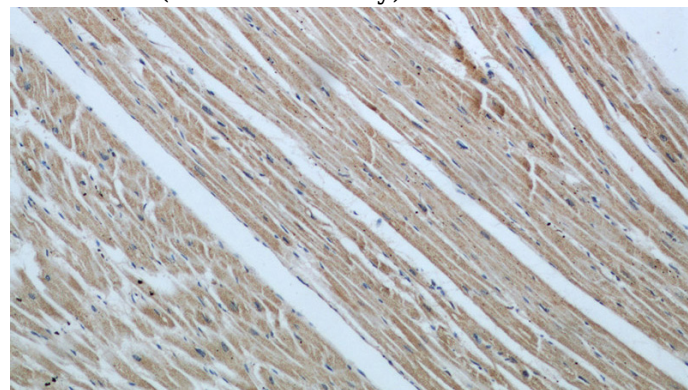
## Preparation

This antibody was obtained by immunization of COPG2 recombinant protein (Accession Number: NM\_012133). Purification method: Antigen affinity purified.

mouse heart tissue were subjected to SDS PAGE followed by western blot with Catalog No:109459(COPG2 antibody) at dilution of 1:1000

## Formulation

PBS with 0.1% sodium azide and 50% glycerol pH 7.3.



## Storage

Store at -20°C. DO NOT ALIQUOT

Immunohistochemical of paraffin-embedded human heart using Catalog No:109459(COPG2 antibody) at dilution of 1:50 (under 10x lens)

## Clonality

Polyclonal

## Ig Type

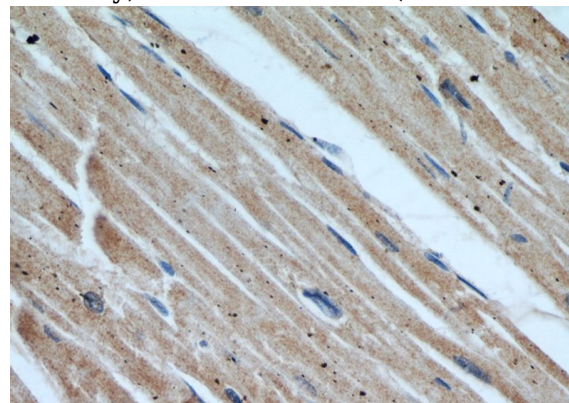
Rabbit IgG

## Applications

ELISA, WB, IHC

## Dilutions

Recommended Dilution:



Immunohistochemical of paraffin-embedded human heart using Catalog No:109459(COPG2

# COPG2 antibody



Catalog Number: 109459

---

antibody) at dilution of 1:50 (under 40x lens)