

SNRPB2 antibody



Catalog Number: 115459

Product name

SNRPB2 antibody

Immunogen

[Human SNRPB2 Recombinant protein \(GST tag\)](#)

Specificity

Human, Mouse, Rat; other species not tested.

Antibody description

SNRPB2 Rabbit Polyclonal antibody. Positive WB detected in HeLa cells, human brain tissue, human kidney tissue, human liver tissue, mouse liver tissue. Positive IP detected in mouse liver tissue. Positive IF detected in HeLa cells. Positive IHC detected in human cervical cancer tissue. Observed molecular weight by Western-blot: 26.5kd

Preparation

This antibody was obtained by immunization of SNRPB2 recombinant protein (Accession Number: NM_003092). Purification method: Antigen affinity purified.

Formulation

PBS with 0.02% sodium azide and 50% glycerol pH 7.3.

Storage

Store at -20°C. DO NOT ALIQUOT

Clonality

Polyclonal

Ig Type

Rabbit IgG

Applications

ELISA, WB, IHC, IF, IP

Dilutions

Recommended Dilution:

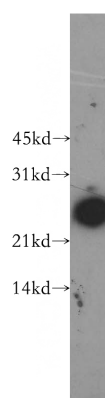
WB: 1:1000-1:10000

IP: 1:500-1:5000

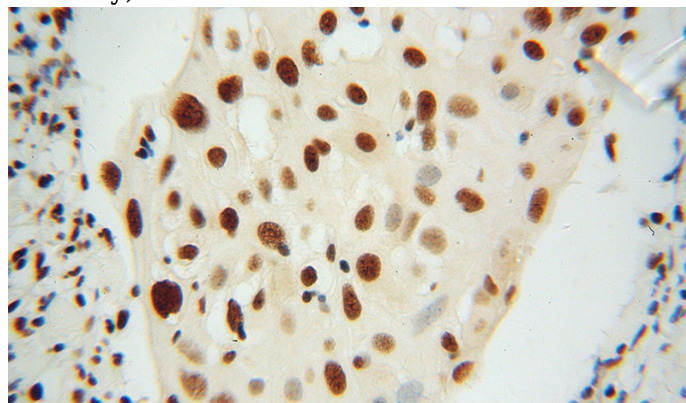
IHC: 1:20-1:200

IF: 1:20-1:200

Validations



HeLa cells were subjected to SDS PAGE followed by western blot with Catalog No:115459(SNRPB2 antibody) at dilution of 1:500

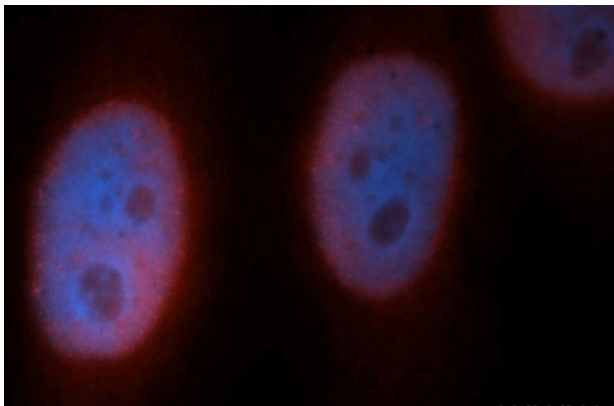


Immunohistochemical of paraffin-embedded human cervical cancer using Catalog No:115459(SNRPB2 antibody) at dilution of 1:100 (under 40x lens)

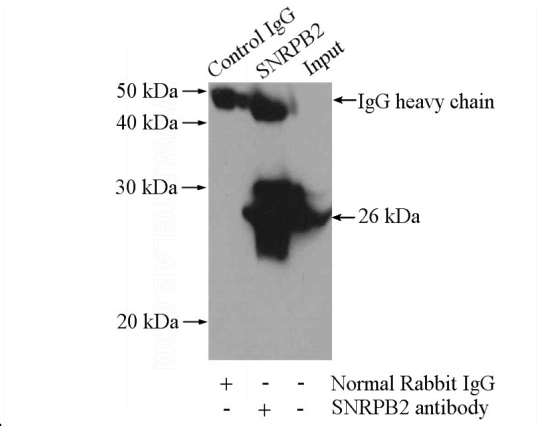
SNRPB2 antibody



Catalog Number: 115459



Immunofluorescent analysis of HeLa cells, using SNRPB2 antibody Catalog No:115459 at 1:50 dilution and Rhodamine-labeled goat anti-rabbit IgG (red). Blue pseudocolor = DAPI (fluorescent



DNA dye).

IP Result of anti-SNRPB2 (IP:Catalog No:115459, 4ug; Detection:Catalog No:115459 1:1000) with mouse liver tissue lysate 4000ug.