

TINAGL1 antibody



Catalog Number: 116059

Product name

TINAGL1 antibody

Specificity

Human, Mouse, Rat; other species not tested.

Antibody description

TINAGL1 Rabbit Polyclonal antibody. Positive IP detected in mouse heart tissue. Positive WB detected in human placenta tissue, human adrenal gland tissue. Observed molecular weight by Western-blot: 52 kDa

Preparation

This antibody was obtained by immunization of TINAGL1 recombinant protein (Accession Number: BC009048). Purification method: Antigen affinity purified.

Formulation

PBS with 0.1% sodium azide and 50% glycerol pH 7.3.

Storage

Store at -20°C. DO NOT ALIQUOT

Clonality

Polyclonal

Ig Type

Rabbit IgG

Applications

ELISA, WB, IP

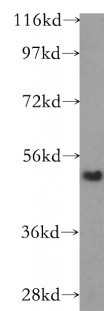
Dilutions

Recommended Dilution:

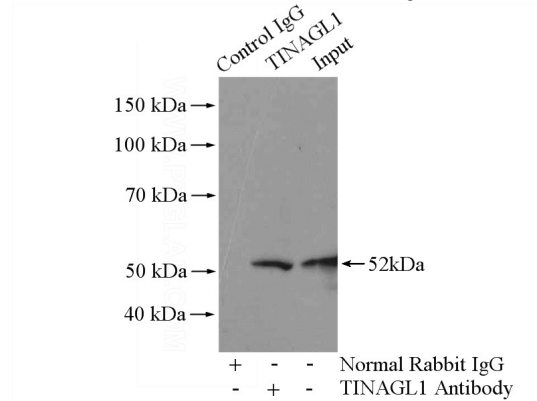
WB: 1:200-1:2000

IP: 1:200-1:2000

Validations



human placenta tissue were subjected to SDS PAGE followed by western blot with Catalog No:116059(TINAGL1 antibody) at dilution of 1:800



IP Result of anti-TINAGL1 (IP:Catalog No:116059, 4ug; Detection:Catalog No:116059 1:500) with mouse heart tissue lysate 4000ug.